

Anti-CLDN3/Claudin-3 Antibody (R2U78)

Summary

| | |
|----------------------------|--|
| Catalog No. | RHA57403 |
| Clone ID | R2U78 |
| Host species | Mouse |
| Tested applications | IHC: 1:100-1:200, IP: 1:100-1:200, WB: 1:500-1:1000 |
| Species reactivity | Human |
| Form | Liquid |
| Storage buffer | 0.01M PBS, pH 7.4, 0.05% Sodium Azide. |
| Concentration | 1 mg/ml |
| Purity | >95% as determined by SDS-PAGE. |
| Clonality | Monoclonal |
| Isotype | IgG2a |
| Applications | IHC, IP, WB |
| Target | Claudin-3, Rat ventral prostate.1 protein homolog, CPE-R 2, C7orf1, Clostridium perfringens enterotoxin receptor 2, CPE-receptor 2, CPETR2, hRVP1, CLDN3 |
| Purification | Protein A/G purified from cell culture supernatant. |
| Endotoxin level | Please contact with the lab for this information. |
| Accession | O15551 |

Stability and Storage

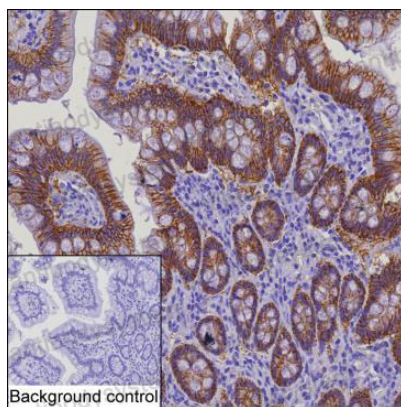
Use a manual defrost freezer and avoid repeated freeze-thaw cycles.

Store at 4°C short term (1-2 weeks). Store at -20°C 12 months. Store at -80°C long term.

Note

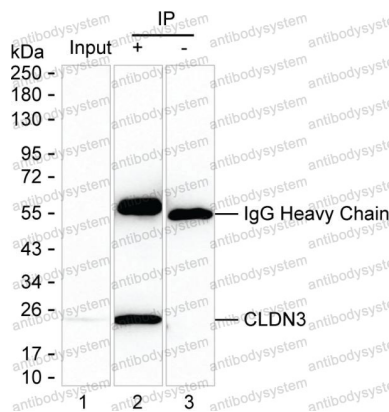
For research use only.

Data Image



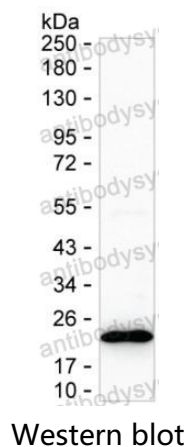
Immunohistochemical

IHC-P analysis of colon tissue by CLDN3 antibody (RHA57403). IHC-P was performed using sections of the formalin-fixed paraffin-embedded colon tissue; Result: Glandular cells are positively stained at the cell membrane.



Immunoprecipitation

Lane 1: HT-29 lysate ; Lane 2: CLDN3 immunoprecipitated from HT-29 lysate by RHA57403; Lane 3: The same as Lane 2 but use IgG isotype control antibody ; Result: RHA57403 can immunoprecipitate CLDN3;



Western blot analysis using CLDN3 mouse mAb
against HT-29 lysate