

# Anti-RGL2 Antibody (R2U50)

## Summary

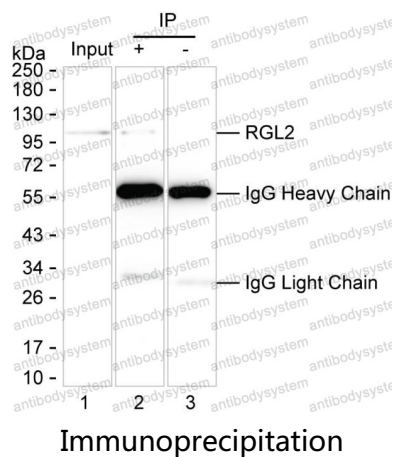
---

|                              |   |
|------------------------------|---|
| <b>Catalog No.</b>           | RHA45102  |
| <b>Clone ID</b>              | R2U50   |
| <b>Host species</b>          | Mouse   |
| <b>Tested applications</b>   | IP: 1:100-1:200   |
| <b>Species reactivity</b>    | Human   |
| <b>Form</b>                  | Liquid  |
| <b>Storage buffer</b>        | 0.01M PBS, pH 7.4, 0.05% Sodium Azide.  |
| <b>Concentration</b>         | 1 mg/ml   |
| <b>Purity</b>                | >95% as determined by SDS-PAGE.   |
| <b>Clonality</b>             | Monoclonal  |
| <b>Isotype</b>               | IgG2a   |
| <b>Applications</b>          | IP  |
| <b>Target</b>                | Ral guanine nucleotide dissociation stimulator-like 2, RAB2L, Ras-associated protein RAB2L, RaIGDS-like factor, RGL2, RaIGDS-like 2                             |
| <b>Purification</b>          | Protein A/G purified from cell culture supernatant.   |
| <b>Endotoxin level</b>       | Please contact with the lab for this information.   |
| <b>Accession</b>             | O15211  |
| <b>Stability and Storage</b> | Use a manual defrost freezer and avoid repeated freeze-thaw cycles.<br>Store at 4°C short term (1-2 weeks). Store at -20°C 12 months. Store at -80°C long term. |

**Note**

For research use only.

## Data Image



Lane 1: K-562 lysate; Lane 2: RGL2 immunoprecipitated from K-562 lysate by RHA45102; Lane 3: The same as Lane 2 but use IgG isotype control antibody ;Result: RHA45102 can immunoprecipitate RGL2;