

Anti-EPHB6 Antibody (R2U47)

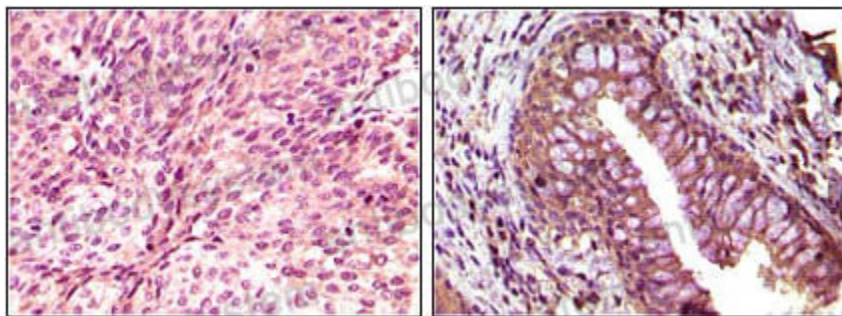
Summary

Catalog No.	RHA44603
Clone ID	R2U47
Host species	Mouse
Tested applications	IHC: 1:200-1:1000, WB: 1:500-1:2000
Species reactivity	Human
Form	Liquid
Storage buffer	0.01M PBS, pH 7.4, 0.05% Sodium Azide.
Concentration	1 mg/ml
Purity	>95% as determined by SDS-PAGE.
Clonality	Monoclonal
Isotype	IgG1
Applications	IHC, WB
Target	Tyrosine-protein kinase-defective receptor EPH-6, EPHB6, Ephrin type-B receptor 6, HEP
Purification	Protein A/G purified from cell culture supernatant.
Endotoxin level	Please contact with the lab for this information.
Accession	O15197
Stability and Storage	Use a manual defrost freezer and avoid repeated freeze-thaw cycles. Store at 4°C short term (1-2 weeks). Store at -20°C 12 months. Store at -80°C long term.

Note

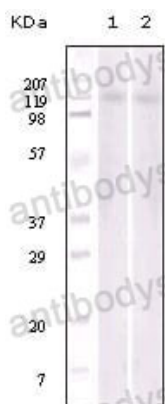
For research use only.

Data Image



Immunohistochemical analysis of paraffin-embedded human bladder carcinoma (left) and return carcinoma (right) tissue, showing cytoplasmic localization using EphB6 mouse mAb with DAB staining.

Immunohistochemical



Western blot analysis of Jurkat (1) and NIH/3T3 (2) cell lysate using EphB6 mouse mAb.

Western blot