

Anti-ZBTB7B Antibody (R2U43)

Summary

Catalog No.	RHA43403
Clone ID	R2U43
Host species	Mouse
Tested applications	IF: 1:200-1:1000, IHC: 1:200-1:1000, WB: 1:500-1:2000
Species reactivity	Human
Form	Liquid
Storage buffer	0.01M PBS, pH 7.4, 0.05% Sodium Azide.
Concentration	1 mg/ml
Purity	>95% as determined by SDS-PAGE.
Clonality	Monoclonal
Isotype	IgG1
Applications	IF, IHC, WB
Target	Krueppel-related zinc finger protein cKrox, Zinc finger and BTB domain-containing protein 15, Zinc finger protein Th-POK, hcKrox, Zinc finger and BTB domain-containing protein 7B, Zfp-67, ZFP67, ZNF857B, T-helper-inducing POZ/Krueppel-like factor, ZBTB15, Zinc finger protein 857B, Zinc finger protein 67 homolog, ZBTB7B
Purification	Protein A/G purified from cell culture supernatant.
Endotoxin level	Please contact with the lab for this information.
Accession	O15156

Stability and Storage

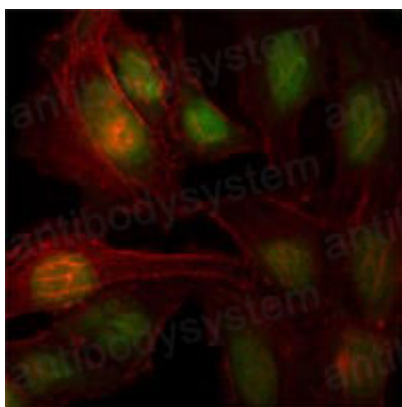
Use a manual defrost freezer and avoid repeated freeze-thaw cycles.

Store at 4°C short term (1-2 weeks). Store at -20°C 12 months. Store at -80°C long term.

Note

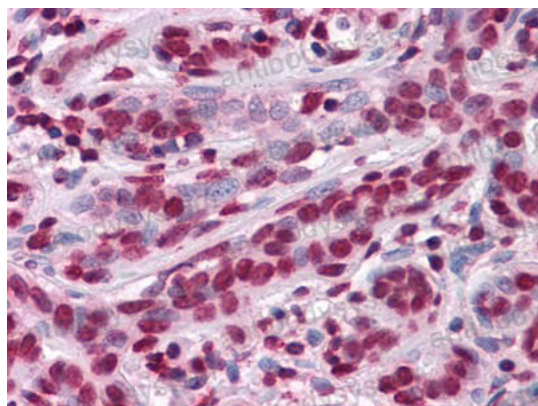
For research use only.

Data Image



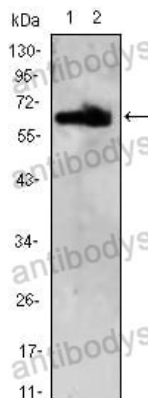
Immunofluorescence

Immunofluorescence analysis of HeLa cells using ZBTB7B mouse mAb (green). Red: Actin filaments have been labeled with Alexa Fluor-555 phalloidin



Immunohistochemical

Immunohistochemical analysis of paraffin-embedded human Breast tissues using anti-ZBTB7B mouse mAb



Western blot

Western blot analysis using ZBTB7B mAb against HEK293 (1,2) cell lysate.