

# Anti-MDM4 Antibody (R2U42)

## Summary

---

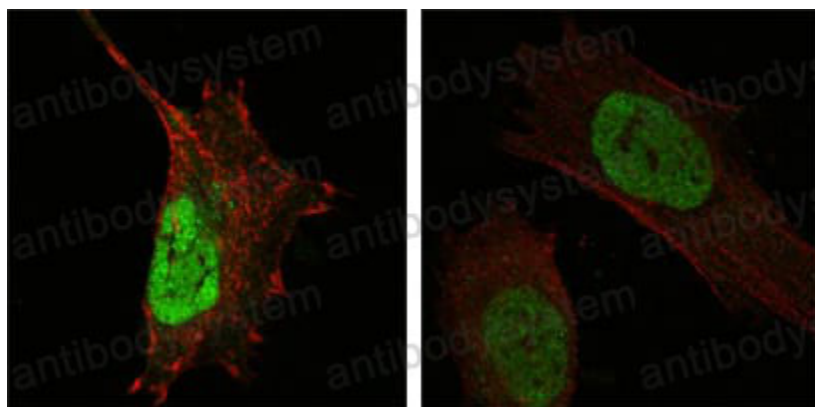
<b>Catalog No.</b>	RHA43202
<b>Clone ID</b>	R2U42
<b>Host species</b>	Mouse
<b>Tested applications</b>	IF: 1:200-1:1000, IHC: 1:200-1:1000, WB: 1:500-1:2000
<b>Species reactivity</b>	Human
<b>Form</b>	Liquid
<b>Storage buffer</b>	0.01M PBS, pH 7.4, 0.05% Sodium Azide.
<b>Concentration</b>	1 mg/ml
<b>Purity</b>	>95% as determined by SDS-PAGE.
<b>Clonality</b>	Monoclonal
<b>Isotype</b>	IgG1
<b>Applications</b>	IF, IHC, WB
<b>Target</b>	MDM4, Mdm2-like p53-binding protein, MDMX, p53-binding protein Mdm4, Protein Mdm4, Protein Mdmx, Double minute 4 protein
<b>Purification</b>	Protein A/G purified from cell culture supernatant.
<b>Endotoxin level</b>	Please contact with the lab for this information.
<b>Accession</b>	O15151
<b>Stability and Storage</b>	Use a manual defrost freezer and avoid repeated freeze-thaw cycles. Store at 4°C short term (1-2 weeks). Store at -20°C 12 months. Store at -80°C long term.

**Note**

For research use only.

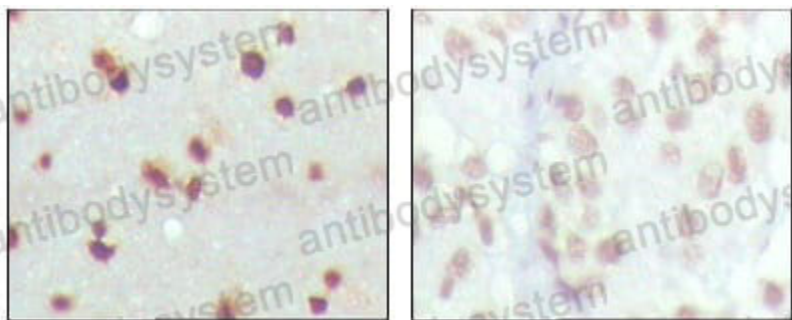
## Data Image

---



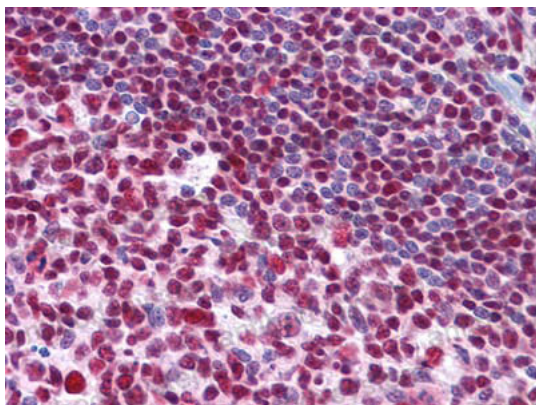
Immunofluorescence

Confocal Immunofluorescence analysis of HeLa (left) and L-02 (right) cells using MDM4 mouse mAb (green). Red: Actin filaments have been labeled with DY-554 phalloidin.



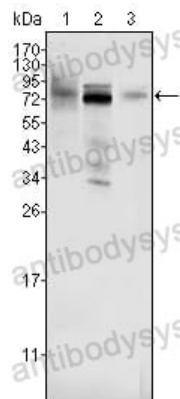
Immunohistochemical

Immunohistochemical analysis of paraffin-embedded human cerebra (left) and lung carcinoma (right) tissues, showing nuclear localization with DAB staining using MDM4 mouse mAb.



Immunohistochemical

Immunohistochemical analysis of paraffin-embedded human Tonsil tissues using MDM4 mouse mAb



Western blot

Western blot analysis using MDM4 mouse mAb against HeLa (1), A549 (2) and A431 (3) cell lysate.