

Anti-ATP2A1 Antibody (R2U25)

Summary

Catalog No.	RHA37302
Clone ID	R2U25
Host species	Mouse
Tested applications	ELISA: 1:10000, FCM: 1:200-1:400, WB: 1:500-1:2000
Species reactivity	Human, Mouse, Monkey
Form	Liquid
Storage buffer	0.01M PBS, pH 7.4, 0.05% Sodium Azide.
Concentration	1 mg/ml
Purity	>95% as determined by SDS-PAGE.
Clonality	Monoclonal
Isotype	IgG1
Applications	ELISA, FCM, WB
Target	ATP2A1, Calcium pump 1, Sarcoplasmic/endoplasmic reticulum calcium ATPase 1, Calcium-transporting ATPase sarcoplasmic reticulum type, fast twitch skeletal muscle isoform, SERCA1, Endoplasmic reticulum class 1/2 Ca(2+) ATPase, SR Ca(2+)-ATPase 1
Purification	Protein A/G purified from cell culture supernatant.
Endotoxin level	Please contact with the lab for this information.
Accession	O14983

Stability and Storage

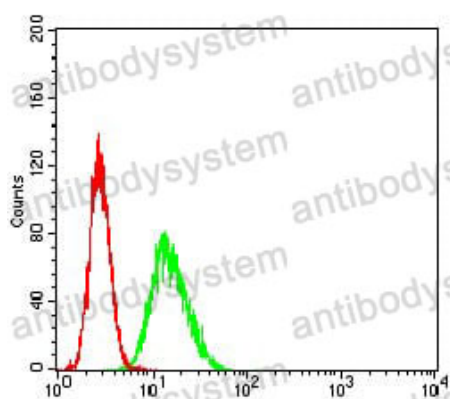
Use a manual defrost freezer and avoid repeated freeze-thaw cycles.

Store at 4°C short term (1-2 weeks). Store at -20°C 12 months. Store at -80°C long term.

Note

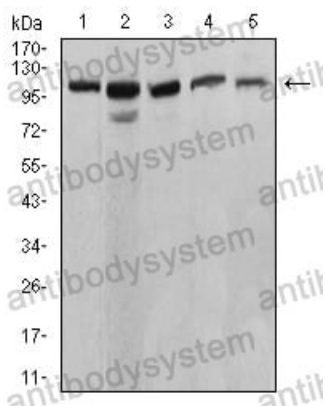
For research use only.

Data Image



Flow Cytometry

Flow cytometric analysis of HeLa cells using ATP2A1 mouse mAb (green) and negative control (red).



Western blot

Western blot analysis using ATP2A1 mouse mAb against C2C12 (1), COS7 (2), HeLa (3), K562 (4), and Jurkat (5) cell lysate.