

Anti-SLC27A2 Antibody (R2U23)

Summary

Catalog No.	RHA36601
Clone ID	R2U23
Host species	Mouse
Tested applications	ELISA: 1:10000, IHC: 1:200-1:1000
Species reactivity	Human
Form	Liquid
Storage buffer	0.01M PBS, pH 7.4, 0.05% Sodium Azide.
Concentration	1 mg/ml
Purity	>95% as determined by SDS-PAGE.
Clonality	Monoclonal
Isotype	IgG1
Applications	ELISA, IHC
Target	VLCS, FACVL1, FATP2, FATP-2, Long-chain-fatty-acid--CoA ligase, Very long-chain acyl-CoA synthetase, Phytanate--CoA ligase, THCA-CoA ligase, Arachidonate--CoA ligase, Fatty-acid-coenzyme A ligase, very long-chain 1, SLC27A2, ACSVL1, VLACS, Solute carrier family 27 member 2, Fatty acid transport protein 2, Very long-chain-fatty-acid-CoA ligase
Purification	Protein A/G purified from cell culture supernatant.
Endotoxin level	Please contact with the lab for this information.
Accession	O14975

Stability and Storage

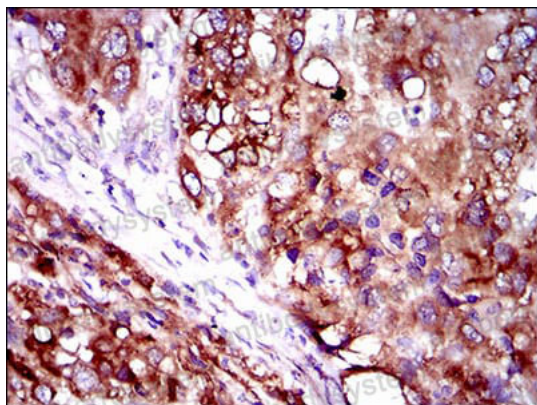
Use a manual defrost freezer and avoid repeated freeze-thaw cycles.

Store at 4°C short term (1-2 weeks). Store at -20°C 12 months. Store at -80°C long term.

Note

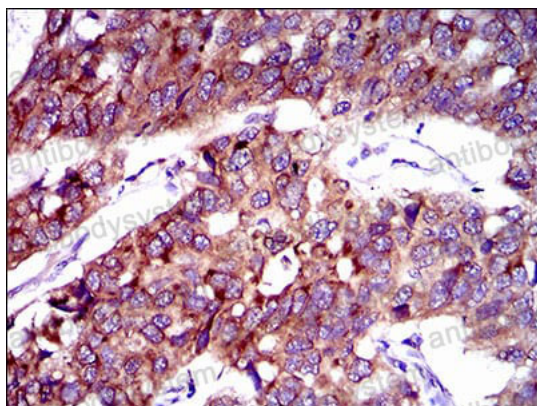
For research use only.

Data Image



Immunohistochemical

Immunohistochemical analysis of paraffin-embedded human liver cancer tissues using SLC27A2 mouse mAb with DAB staining.



Immunohistochemical

Immunohistochemical analysis of paraffin-embedded human esophageal cancer tissues using SLC27A2 mouse mAb with DAB staining.