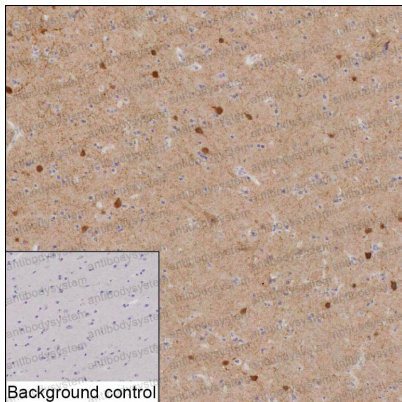


Anti-CPLX1 Antibody (R2U02)

Summary

Catalog No.	RHA31301
Clone ID	R2U02
Host species	Mouse
Tested applications	IHC: 1:20-1:100
Species reactivity	Human
Form	Liquid
Storage buffer	0.01M PBS, pH 7.4, 0.05% Sodium Azide.
Concentration	1 mg/ml
Purity	>95% as determined by SDS-PAGE.
Clonality	Monoclonal
Isotype	IgG1
Applications	IHC
Target	Complexin-1, CPLX1, CPX I, Synaphin-2, Complexin I
Purification	Protein A/G purified from cell culture supernatant.
Endotoxin level	Please contact with the lab for this information.
Accession	O14810
Stability and Storage	Use a manual defrost freezer and avoid repeated freeze-thaw cycles. Store at 4°C short term (1-2 weeks). Store at -20°C 12 months. Store at -80°C long term.
Note	For research use only.

Data Image



Immunohistochemical

IHC-P analysis of brain tissue by CPLX1 antibody (RHA31301). IHC-P was performed using sections of the formalin-fixed paraffin-embedded brain tissue; Result: Neuropil and cytoplasm of neuronal cells are positively stained.