

Anti-MAP2K7 Antibody (R2T85)

Summary

Catalog No.	RHA28101
Clone ID	R2T85
Host species	Mouse
Tested applications	ELISA: 1:10000, FCM: 1:200-1:400, IF: 1:200-1:1000, IHC: 1:200-1:1000
Species reactivity	Human
Form	Liquid
Storage buffer	0.01M PBS, pH 7.4, 0.05% Sodium Azide.
Concentration	1 mg/ml
Purity	>95% as determined by SDS-PAGE.
Clonality	Monoclonal
Isotype	IgG1
Applications	ELISA, FCM, IF, IHC
Target	SAPKK4, JNK-activating kinase 2, MAPK/ERK kinase 7, MAPKK 7, c-Jun N-terminal kinase kinase 2, JNKK2, SAPK kinase 4, MEK 7, MAP kinase kinase 7, SKK4, PRKMK7, Dual specificity mitogen-activated protein kinase kinase 7, Stress-activated protein kinase kinase 4, JNK kinase 2, MKK7, MAP2K7, MEK7, JNKK 2, SAPKK-4
Purification	Protein A/G purified from cell culture supernatant.
Endotoxin level	Please contact with the lab for this information.
Accession	O14733

Stability and Storage

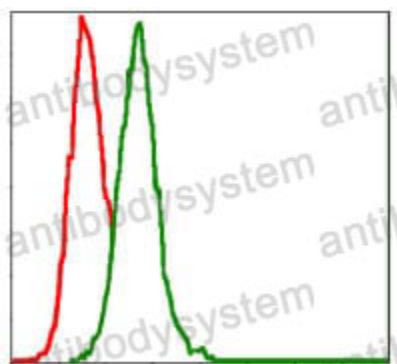
Use a manual defrost freezer and avoid repeated freeze-thaw cycles.

Store at 4°C short term (1-2 weeks). Store at -20°C 12 months. Store at -80°C long term.

Note

For research use only.

Data Image



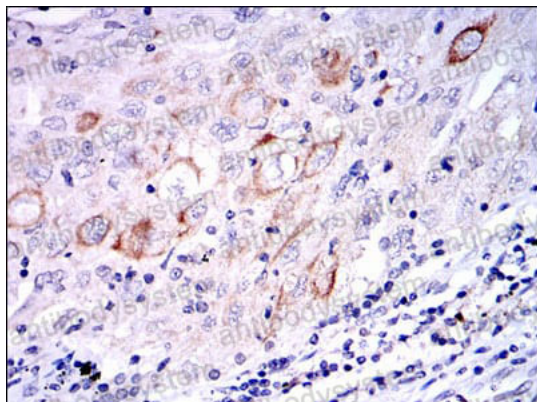
Flow Cytometry

Flow cytometric analysis of Hela cells using MAP2K7 mouse mAb (green) and negative control (red).



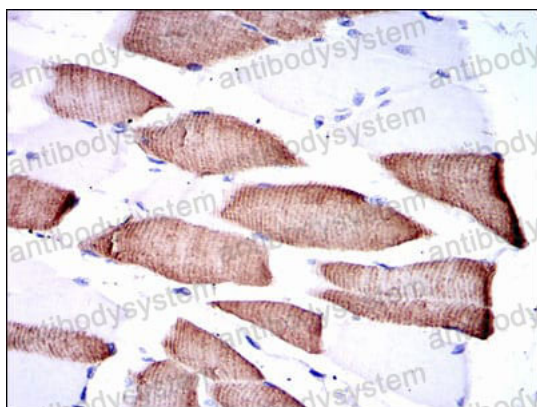
Immunofluorescence

Immunofluorescence analysis of Hela cells using MAP2K7 mouse mAb (green). Red: Actin filaments have been labeled with Alexa Fluor-555 phalloidin.



Immunohistochemical

Immunohistochemical analysis of paraffin-embedded human lung cancer tissues using MAP2K7 mouse mAb with DAB staining.



Immunohistochemical

Immunohistochemical analysis of paraffin-embedded human muscle tissues using MAP2K7 mouse mAb with DAB staining.