

Anti-DLGAP1/SAPAP1/GKAP Antibody (R2T67)

Summary

Catalog No.	RHA19405
Clone ID	R2T67
Host species	Mouse
Tested applications	ELISA: 1:10000, IF: 1:200-1:1000, IHC: 1:200-1:1000
Species reactivity	Human
Form	Liquid
Storage buffer	0.01M PBS, pH 7.4, 0.05% Sodium Azide.
Concentration	1 mg/ml
Purity	>95% as determined by SDS-PAGE.
Clonality	Monoclonal
Isotype	IgG1
Applications	ELISA, IF, IHC
Target	DAP-1, DAP1, SAP90/PSD-95-associated protein 1, PSD-95/SAP90-binding protein 1, Guanylate kinase-associated protein, hGKAP, GKAP, Disks large-associated protein 1, SAPAP1, DLGAP1
Purification	Protein A/G purified from cell culture supernatant.
Endotoxin level	Please contact with the lab for this information.
Accession	O14490

Stability and Storage

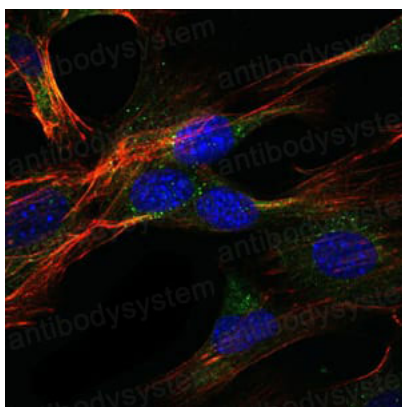
Use a manual defrost freezer and avoid repeated freeze-thaw cycles.

Store at 4°C short term (1-2 weeks). Store at -20°C 12 months. Store at -80°C long term.

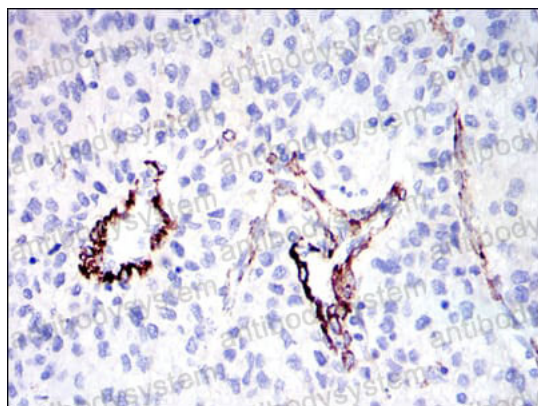
Note

For research use only.

Data Image



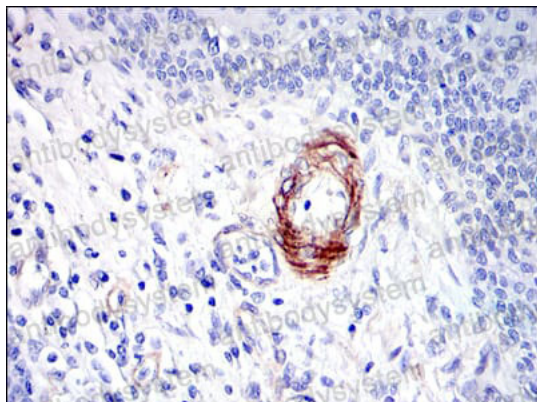
Immunofluorescence



Immunohistochemical

Immunofluorescence analysis of NIH/3T3 cells using GKAP mouse mAb (green). Blue: DRAQ5 fluorescent DNA dye. Red: Actin filaments have been labeled with Alexa Fluor-555 phalloidin.

Immunohistochemical analysis of paraffin-embedded human liver cancer tissues using GKAP mouse mAb with DAB staining.



Immunohistochemical

Immunohistochemical analysis of paraffin-embedded human esophagus tissues using GKAP mouse mAb with DAB staining.