

Anti-DDX3X Antibody (R2T56)

Summary

Catalog No.	RHA16101
Clone ID	R2T56
Host species	Mouse
Tested applications	ELISA: 1:10000, FCM: 1:200-1:400, IF: 1:50-1:500, IHC: 1:100-1:500, WB: 1:500-1:2000
Species reactivity	Human, Mouse, Rat, Rabbit, Monkey
Form	Liquid
Storage buffer	0.01M PBS, pH 7.4, 0.05% Sodium Azide.
Concentration	1 mg/ml
Purity	>95% as determined by SDS-PAGE.
Clonality	Monoclonal
Isotype	IgG2a
Applications	ELISA, FCM, IF, IHC, WB
Target	DEAD box, X isoform, CAP-Rf, DDX3, HLP2, DEAD box protein 3, X-chromosomal, DDX3X, ATP-dependent RNA helicase DDX3X, Helicase-like protein 2, DBX
Purification	Protein A/G purified from cell culture supernatant.
Endotoxin level	Please contact with the lab for this information.
Accession	O00571

Stability and Storage

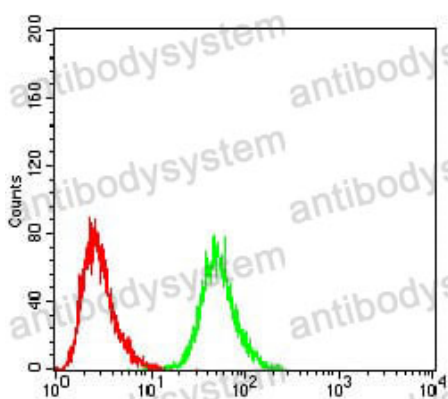
Use a manual defrost freezer and avoid repeated freeze-thaw cycles.

Store at 4°C short term (1-2 weeks). Store at -20°C 12 months. Store at -80°C long term.

Note

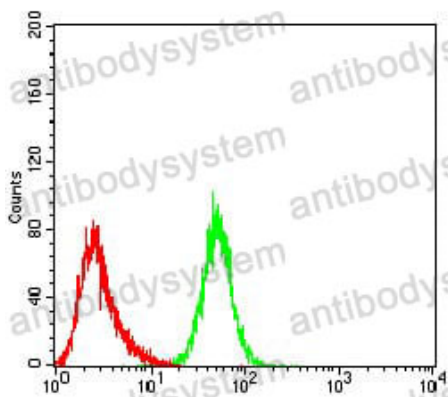
For research use only.

Data Image



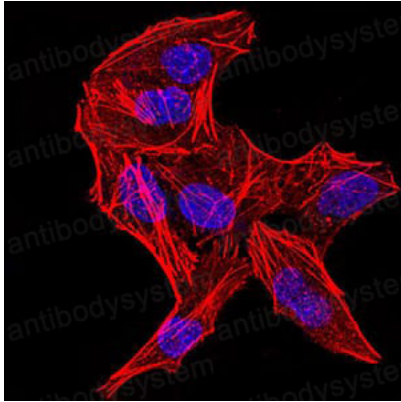
Flow Cytometry

Flow cytometric analysis of HeLa cells using DDX3X mouse mAb (green) and negative control (red).



Flow Cytometry

Flow cytometric analysis of HepG2 cells using DDX3X mouse mAb (green) and negative control (red).



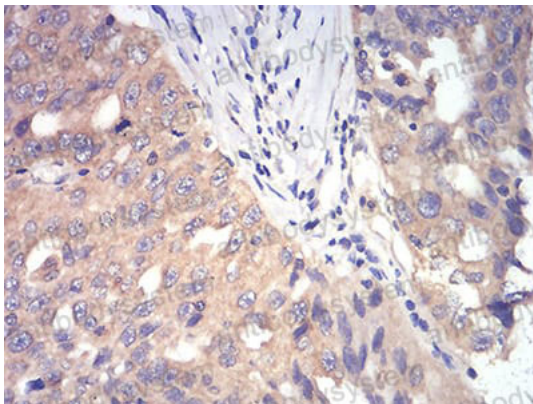
Immunofluorescence

Immunofluorescence analysis of HeLa cells using DDX3X mouse mAb. Blue: DRAQ5 fluorescent DNA dye. Red: Actin filaments have been labeled with Alexa Fluor- 555 phalloidin.



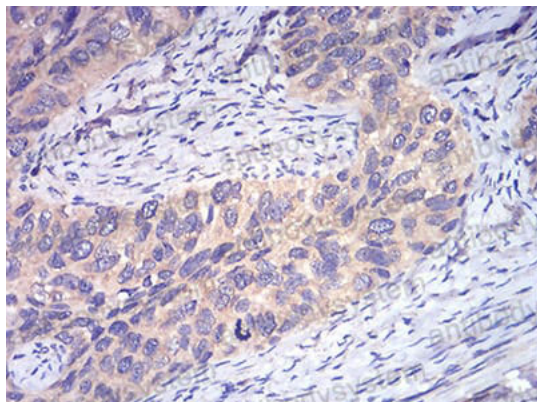
Immunofluorescence

Immunofluorescence analysis of HeLa cells using DDX3X mouse mAb (green). Blue: DRAQ5 fluorescent DNA dye. Red: Actin filaments have been labeled with Alexa Fluor- 555 phalloidin.



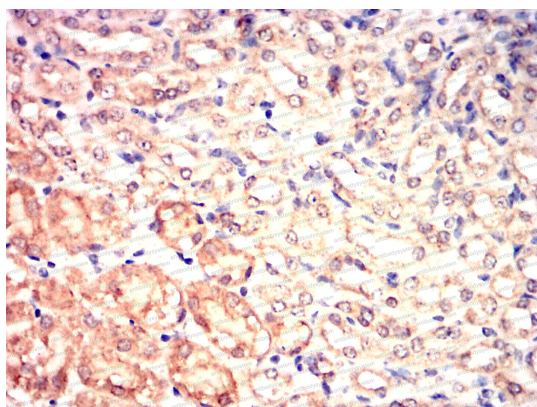
Immunohistochemical

Immunohistochemical analysis of paraffin-embedded human ovarian cancer tissues using DDX3X mouse mAb with DAB staining.



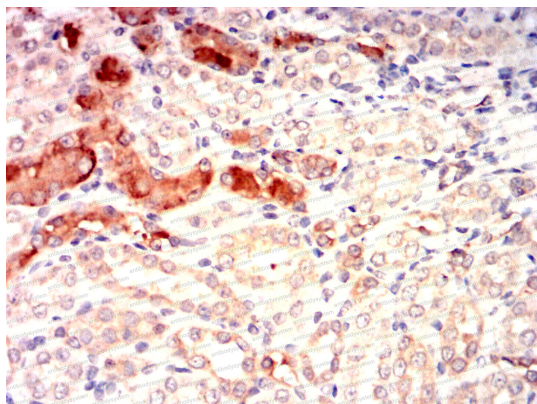
Immunohistochemical

Immunohistochemical analysis of paraffin-embedded human cervical cancer tissues using DDX3X mouse mAb with DAB staining.



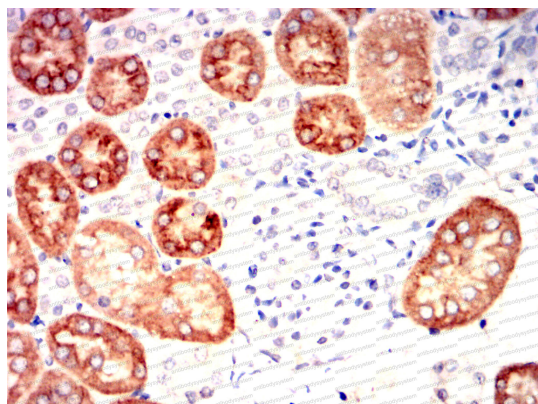
Immunohistochemical

Immunohistochemical analysis of paraffin-embedded Mouse kidney using DDX3X mouse mAb with DAB staining.



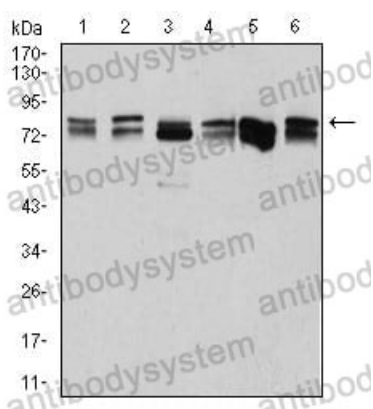
Immunohistochemical

Immunohistochemical analysis of paraffin-embedded Rat kidney using DDX3X mouse mAb with DAB staining.



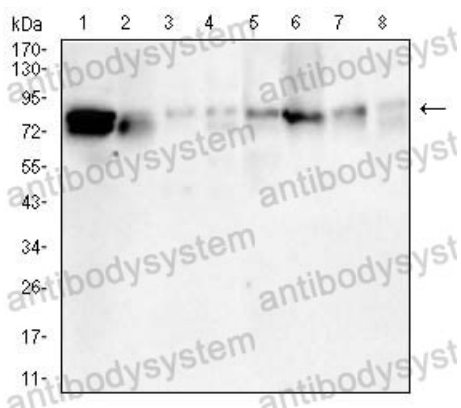
Immunohistochemical

Immunohistochemical analysis of paraffin-embedded Rabbit kidney using DDX3X mouse mAb with DAB staining.



Western blot

Western blot analysis using DDX3X mouse mAb against Hela (1), NIH3T3 (2), C6 (3), COS7 (4), A431 (5), and HEK293 (6) cell lysate.



Western blot

Western blot analysis using DDX3X mouse mAb against PC-12(1) Raw264.7(2)NIH/3T3 (3) NRK(4)C6(5)F9(6)COS-7(8)CHO3D10(8) cell lysate.