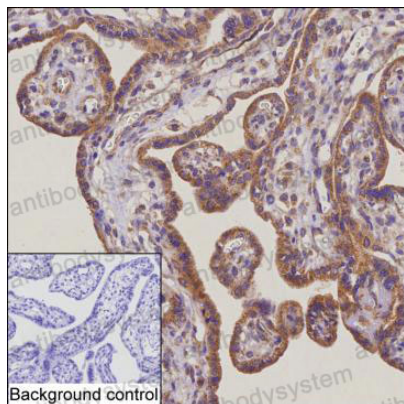


Anti-DLL1 Antibody (R2T54)

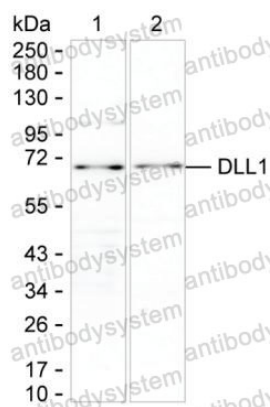
Summary

Catalog No.	RHA15301
Clone ID	R2T54
Host species	Mouse
Tested applications	IHC: 1:100-1:200, WB: 1:500-1:1000
Species reactivity	Human, Rat
Form	Liquid
Storage buffer	0.01M PBS, pH 7.4, 0.05% Sodium Azide.
Concentration	1 mg/ml
Purity	>95% as determined by SDS-PAGE.
Clonality	Monoclonal
Isotype	IgG1
Applications	IHC, WB
Target	DLL1, Drosophila Delta homolog 1, Delta1, H-Delta-1, Delta-like protein 1
Purification	Protein A/G purified from cell culture supernatant.
Endotoxin level	Please contact with the lab for this information.
Accession	O00548
Stability and Storage	Use a manual defrost freezer and avoid repeated freeze-thaw cycles. Store at 4°C short term (1-2 weeks). Store at -20°C 12 months. Store at -80°C long term.
Note	For research use only.

Data Image



Immunohistochemical



Western blot

IHC-P analysis of placenta tissue by DLL1 antibody (RHA15301). IHC-P was performed using sections of the formalin-fixed paraffin-embedded placenta tissue; Result: Trophoblastic cells are positively stained at the cytoplasm.

Western blot analysis using DLL1 mouse mAb against A549 lysate and rat heart lysate