

Anti-SAP18 Antibody (R2T43)

Summary

Catalog No.	RHA11201
Clone ID	R2T43
Host species	Mouse
Tested applications	IHC: 1:20-1:100
Species reactivity	Human
Form	Liquid
Storage buffer	0.01M PBS, pH 7.4, 0.05% Sodium Azide.
Concentration	1 mg/ml
Purity	>95% as determined by SDS-PAGE.
Clonality	Monoclonal
Isotype	IgG2a
Applications	IHC
Target	SAP18, 2HOR0202, Histone deacetylase complex subunit SAP18, 18 kDa Sin3-associated polypeptide, Cell growth-inhibiting gene 38 protein, Sin3-associated polypeptide p18
Purification	Protein A/G purified from cell culture supernatant.
Endotoxin level	Please contact with the lab for this information.
Accession	O00422

Stability and Storage

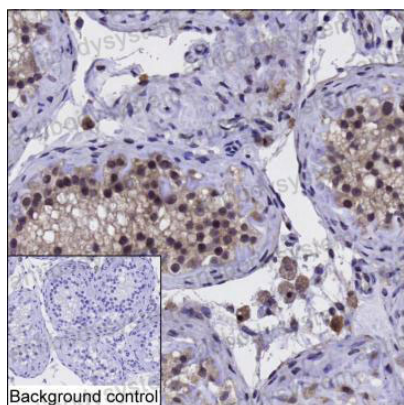
Use a manual defrost freezer and avoid repeated freeze-thaw cycles.

Store at 4°C short term (1-2 weeks). Store at -20°C 12 months. Store at -80°C long term.

Note

For research use only.

Data Image



Immunohistochemical

IHC-P analysis of testis tissue by SAP18 antibody (RHA11201). IHC-P was performed using sections of the formalin-fixed paraffin-embedded testis tissue; Result: Cells in seminiferous ducts are positively stained at the nuclei.