

Anti-HIP1 Antibody (R2T36)

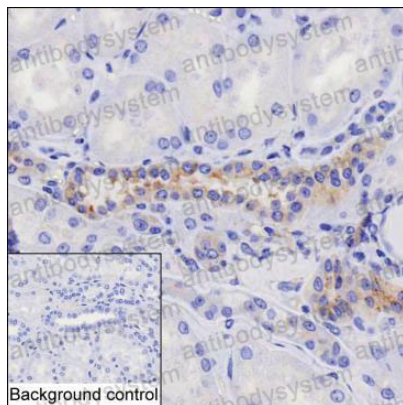
Summary

Catalog No.	RHA08102
Clone ID	R2T36
Host species	Mouse
Tested applications	IHC: 1:100-1:200, IP: 1:100-1:200, WB: 1:500-1:1000
Species reactivity	Human
Form	Liquid
Storage buffer	0.01M PBS, pH 7.4, 0.05% Sodium Azide.
Concentration	1 mg/ml
Purity	>95% as determined by SDS-PAGE.
Clonality	Monoclonal
Isotype	IgG2a
Applications	IHC, IP, WB
Target	Huntingtin-interacting protein I, HIP-I, Huntingtin-interacting protein 1, HIP-1, HIP1
Purification	Protein A/G purified from cell culture supernatant.
Endotoxin level	Please contact with the lab for this information.
Accession	O00291
Stability and Storage	Use a manual defrost freezer and avoid repeated freeze-thaw cycles. Store at 4°C short term (1-2 weeks). Store at -20°C 12 months. Store at -80°C long term.

Note

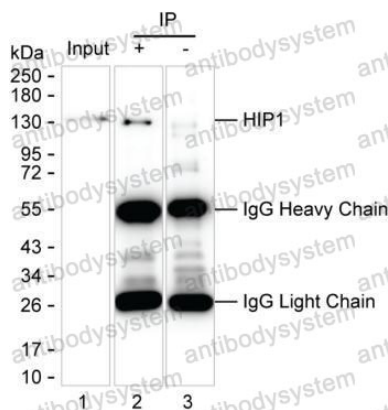
For research use only.

Data Image



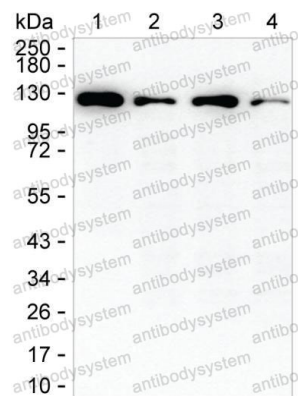
Immunohistochemical

IHC-P analysis of kidney tissue by HIP1 antibody (RHA08102). IHC-P was performed using sections of the formalin-fixed paraffin-embedded kidney tissue; Result: Cells in tubules are positively stained at the cytoplasm.



Immunoprecipitation

Lane 1: A549 lysate; Lane 2: HIP1 immunoprecipitated from A549 lysate by RHA08102; Lane 3: The same as Lane 2 but use IgG isotype control antibody; Result: RHA08102 can immunoprecipitate HIP1;



Western blot

Lane 1: 15 μ g of A549 lysate; Lane 2: 15 μ g of HCT116 lysate; Lane 3: 15 μ g of HEK-293 lysate; Lane 4: 15 μ g of HeLa lysate; Result: RHA08102 can detect HIP1 by Western blotting.