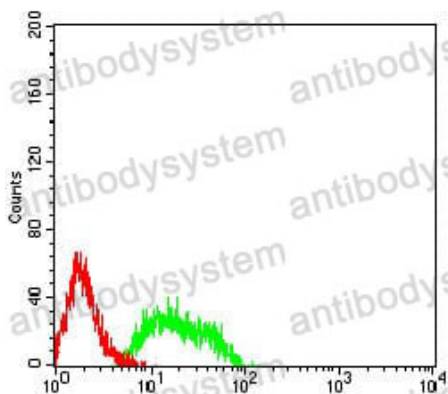


Anti-GRM8 Antibody (R2T27)

Summary

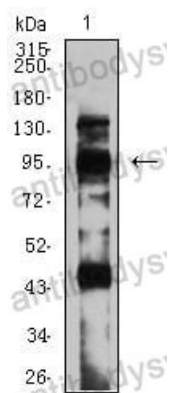
Catalog No.	RHA06101
Clone ID	R2T27
Host species	Mouse
Tested applications	ELISA: 1:10000, FCM: 1:200-1:400, WB: 1:500-1:2000
Species reactivity	Human
Form	Liquid
Storage buffer	0.01M PBS, pH 7.4, 0.05% Sodium Azide.
Concentration	1 mg/ml
Purity	>95% as determined by SDS-PAGE.
Clonality	Monoclonal
Isotype	IgG1
Applications	ELISA, FCM, WB
Target	Metabotropic glutamate receptor 8, GRM8, MGLUR8, GPRC1H, mGluR8
Purification	Protein A/G purified from cell culture supernatant.
Endotoxin level	Please contact with the lab for this information.
Accession	O00222
Stability and Storage	Use a manual defrost freezer and avoid repeated freeze-thaw cycles. Store at 4°C short term (1-2 weeks). Store at -20°C 12 months. Store at -80°C long term.
Note	For research use only.

Data Image



Flow Cytometry

Flow cytometric analysis of SK-N-SH cells using GRM8 mouse mAb (green) and negative control (red).



Western blot

Western blot analysis using GRM8 mouse mAb against C6 (1) cell lysate.