

Anti-Human Ki67/MKI67 Monoclonal Antibody (m1A02)

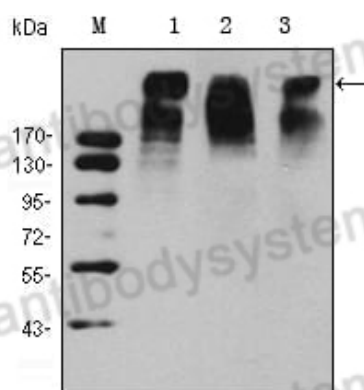
Summary

Catalog No.	MHE46102
Alternative Names	MKI67, Proliferation marker protein Ki-67, Antigen Ki67, Antigen KI-67, Antigen identified by monoclonal antibody Ki-67
Clone ID	m1A02
Host species	Mouse
Tested applications	FCM: 1:200-1:400; IHC: 1:200-1:1000, WB: 1:500-1:2000
Species reactivity	Human, Mouse, Rat, Rabbit, Monkey
Immunogen	Recombinant Human Ki67/MKI67.
Form	Liquid
Storage buffer	0.01M PBS, 0.03% Sodium Azide.
Clonality	Monoclonal
Isotype	IgG1
Applications	FCM, IHC, WB
Purification	Protein A/G purified from cell culture supernatant.
Endotoxin level	Please contact with the lab for this information.
Accession	P46013
Stability and Storage	Use a manual defrost freezer and avoid repeated freeze thaw cycles. Store at 4 °C for frequent use. Store at -20 °C for twelve months from the date of receipt.

Note

For research use only.

Data Image



Western Blot

Various lysates were subjected to SDS PAGE followed by western blot with KI67 antibody (MHE46102) at 1 µg/ml.

Lane 1: HeLa

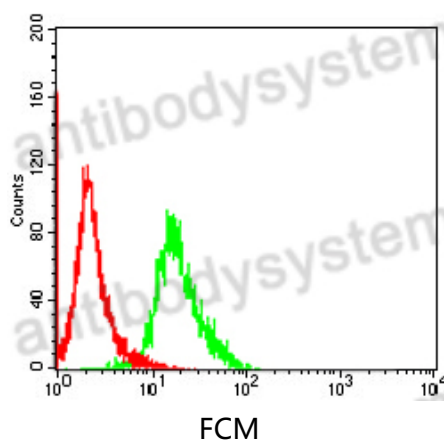
Lane 2: MCF-7

Lane 3: Raji

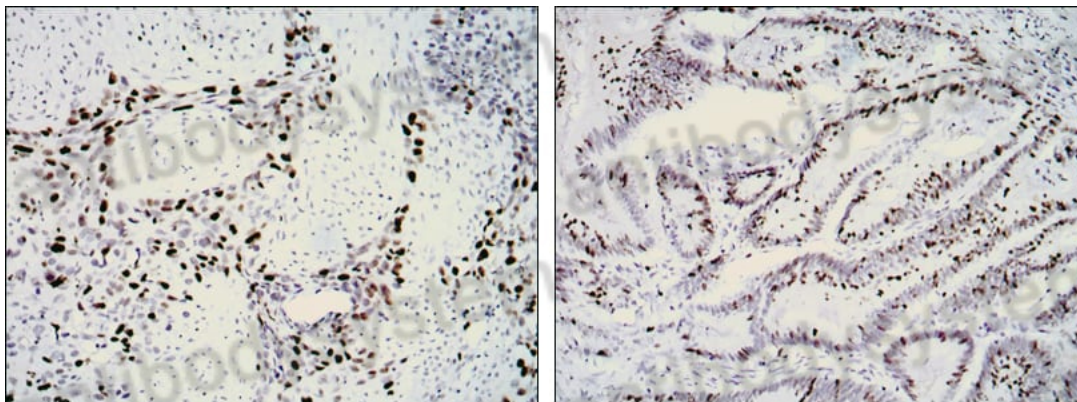
Second Ab: Goat Anti-Mouse IgG H&L Polyclonal antibody, HRP (PMB96431) at 0.1 µg/mL.

Predict MW:

Observed MW:



Flow cytometric analysis of NIH/3T3 cells using KI67 mouse mAb (green) and negative control (red).



Immunohistochemical analysis of paraffin-embedded human lung cancer (left) and rectal cancer (right) using KI67 mouse mAb with DAB staining.

Immunohistochemical