

Recombinant Human CD215/IL15RA Protein, C-Fc (Active)

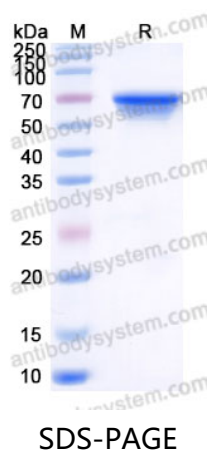
Summary

Catalog No.	AHG46402
Alternative Names	CD215, IL15RA, CD215 antigen, IL-15 receptor subunit alpha, IL-15RA, IL-15R-alpha, interleukin 15 receptor, alpha, interleukin-15 receptor subunit alpha, MGC104179
Form	Lyophilized
Storage buffer	Lyophilized from a 0.2 µm filtered solution in 20 mM PB, 150 mM NaCl, pH 7.4.
Purity	>90% as determined by SDS-PAGE.
Applications	Bioactivity, ELISA, Immunogen, SDS-PAGE, WB
Endotoxin level	< 1 EU/µg as determined by LAL test.
Expression system	Mammalian Cells
Accession	Q13261-3
Protein length	Ile31-Thr172
Nature	Recombinant
Predicted molecular weight	42.2 kDa
Stability and Storage	Use a manual defrost freezer and avoid repeated freeze thaw cycles. Store at 2 to 8°C for one week. Store at -20 to -80°C for twelve months from the date of receipt.
Reconstitution	Reconstitute in sterile water for a stock solution. A copy of datasheet will be provided with the products, please refer to it for details.

Recombinant Proteins & Antibodies

Species	Homo sapiens (Human)
Shipping	In general, proteins are provided as lyophilized powder/frozen liquid. They are shipped out with dry ice/blue ice unless customers require otherwise.
Note	For research use only.

Data Image



SDS-PAGE for Recombinant Human CD215/IL15RA Protein