

Recombinant Human CD116/CSF2RA Protein, C-His

Summary

Catalog No.	EHD11501
Alternative Names	CD116, CSF2R, GMR-alpha, CSF2RA, Granulocyte-macrophage colony-stimulating factor receptor subunit alpha, CSF2RY, GMCSFR-alpha, GM-CSF-R-alpha, CDw116
Form	Lyophilized
Storage buffer	Lyophilized from a solution in PBS pH 7.4, 1mM EDTA, 4% Trehalose, 1% Mannitol.
Purity	>90% as determined by SDS-PAGE.
Applications	ELISA, Immunogen, SDS-PAGE, WB, Bioactivity testing in progress
Endotoxin level	Please contact with the lab for this information.
Expression system	Mammalian Cells
Accession	P15509
Protein length	Met1-Gly320
Nature	Recombinant
Predicted molecular weight	37.87 kDa
Stability and Storage	Use a manual defrost freezer and avoid repeated freeze thaw cycles. Store at 2 to 8°C for frequent use. Store at -20 to -80°C for twelve months from the date of receipt.
Reconstitution	Reconstitute in sterile water for a stock solution. A copy of datasheet will be provided with the products, please refer to it for details.
Species	Homo sapiens (Human)

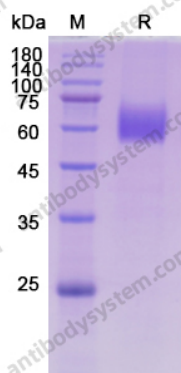
Shipping

In general, proteins are provided as lyophilized powder/frozen liquid. They are shipped out with dry ice/blue ice unless customers require otherwise.

Note

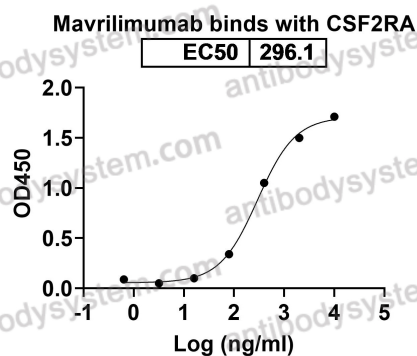
For research use only.

Data Image



SDS-PAGE

SDS PAGE for recombinant Human CD116 / CSF2RA



Bioactivity

Detects Mavrimumab in indirect ELISAs.