

Recombinant Human CXCL12/SDF-1 Protein, Tag free (Active)

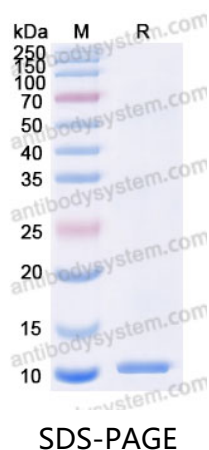
Summary

| | |
|-----------------------------------|--|
| Catalog No. | AHE55401 |
| Alternative Names | Intercrine reduced in hepatomas, hSDF-1, Stromal cell-derived factor 1, SDF-1, Pre-B cell growth-stimulating factor, SDF1, SDF1A, C-X-C motif chemokine 12, SDF1B, CXCL12, IRH, PBSF, hIRH |
| Form | Lyophilized |
| Storage buffer | Lyophilized from a 0.2 µm filtered solution in 20 mM PB, 150 mM NaCl, pH 7.4. |
| Purity | >90% as determined by SDS-PAGE. |
| Applications | Bioactivity, ELISA, Immunogen, SDS-PAGE, WB |
| Endotoxin level | < 0.01 EU/µg as determined by LAL test. |
| Expression system | E. coli |
| Accession | P48061 |
| Protein length | Lys22-Lys89 |
| Nature | Recombinant |
| Predicted molecular weight | 8 kDa |
| Stability and Storage | Use a manual defrost freezer and avoid repeated freeze thaw cycles. Store at 2 to 8°C for one week. Store at -20 to -80°C for twelve months from the date of receipt. |
| Reconstitution | Reconstitute in sterile water for a stock solution. A copy of datasheet will be provided with the products, please refer to it for details. |

Recombinant Proteins & Antibodies

| | |
|-----------------|--|
| Species | Homo sapiens (Human) |
| Shipping | In general, proteins are provided as lyophilized powder/frozen liquid. They are shipped out with dry ice/blue ice unless customers require otherwise. |
| Note | For research use only. |

Data Image



SDS-PAGE for Recombinant Human CXCL12/SDF-1 Protein