

# Recombinant Human LIF Protein, Tag free (Active)

## Summary

---

<b>Catalog No.</b>	AHD08002
<b>Alternative Names</b>	Emfilermin, D factor, HILDA, LIF, MLPLI, Melanoma-derived LPL inhibitor, Leukemia inhibitory factor, Differentiation-stimulating factor
<b>Form</b>	Lyophilized
<b>Storage buffer</b>	Lyophilized from a 0.2 µm filtered solution in 20 mM PB, 2% Sucrose, 4% Mannitol, 0.02% Tween 80, pH 7.4.
<b>Purity</b>	>90% as determined by SDS-PAGE.
<b>Applications</b>	Bioactivity, ELISA, Immunogen, SDS-PAGE, WB
<b>Endotoxin level</b>	< 0.01 EU/µg as determined by LAL test.
<b>Expression system</b>	E. coli
<b>Accession</b>	P15018
<b>Protein length</b>	Ser23-Phe202
<b>Nature</b>	Recombinant
<b>Predicted molecular weight</b>	19.7 kDa
<b>Stability and Storage</b>	Use a manual defrost freezer and avoid repeated freeze thaw cycles. Store at 2 to 8°C for one week. Store at -20 to -80°C for twelve months from the date of receipt.
<b>Reconstitution</b>	Reconstitute in sterile water for a stock solution. A copy of datasheet will be provided with the products, please refer to it for details.
<b>Species</b>	Homo sapiens (Human)

**Shipping**

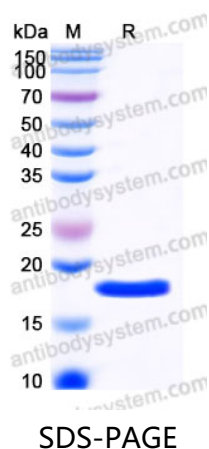
In general, proteins are provided as lyophilized powder/frozen liquid. They are shipped out with dry ice/blue ice unless customers require otherwise.

**Note**

For research use only.

**Data Image**

---



SDS-PAGE for Recombinant Human LIF Protein