

Recombinant Human GSDME Protein, N-GST

Summary

Catalog No.	YHA91102
Alternative Names	ICERE-1, ICERE1, GSDME-CT, GSDME-NT, DFNA5, Inversely correlated with estrogen receptor expression 1, Gasdermin-E, GSDME, Non-syndromic hearing impairment protein 5
Form	Lyophilized
Storage buffer	Lyophilized from a solution in PBS pH 7.4, 0.02% SKL, 1mM EDTA, 5% Trehalose, 5% Mannitol.
Purity	>90% as determined by SDS-PAGE.
Applications	ELISA, Immunogen, SDS-PAGE, WB, Bioactivity testing in progress
Endotoxin level	Please contact with the lab for this information.
Expression system	E. coli
Accession	O60443
Protein length	Met1-Ser496
Nature	Recombinant
Predicted molecular weight	80.55 kDa
Stability and Storage	Use a manual defrost freezer and avoid repeated freeze thaw cycles. Store at 2 to 8°C for one week. Store at -20 to -80°C for twelve months from the date of receipt.
Reconstitution	Reconstitute in sterile water for a stock solution.
Species	Homo sapiens (Human)

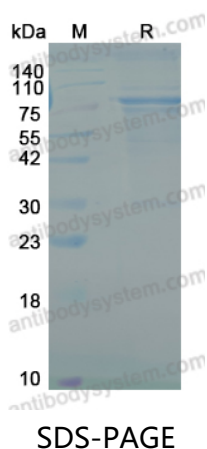
Recombinant Proteins & Antibodies

Shipping

In general, proteins are provided as lyophilized powder/frozen liquid. They are shipped out with dry ice/blue ice unless customers require otherwise.

Note

For research use only.

Data Image

SDS-PAGE for Recombinant Human GSDME Protein