

Anti-rpoB/RNA polymerase beta Antibody (R2T14)

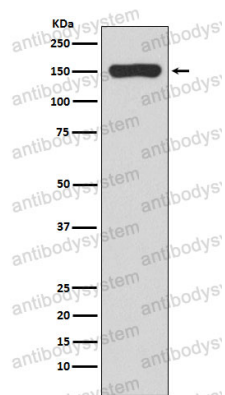
Summary

Catalog No.	RXX25201
Clone ID	R2T14
Host species	Rabbit
Tested applications	IP: 1:20-1:50, WB: 1:1000-1:2000
Species reactivity	Escherichia coli (strain K12)
Form	Liquid
Storage buffer	0.01M PBS, pH 7.4, 0.05% BSA, 50% Glycerol, 0.05% Sodium azide.
Concentration	1 mg/ml
Purity	>95% by SDS-PAGE.
Clonality	Monoclonal
Isotype	IgG
Applications	IP, WB
Target	groN, nitB, rif, RNA pol beta, RNA polymerase subunit beta, ron, rpoB, stl, stv, tabD, Transcriptase subunit beta, RNA polymerase beta
Purification	Protein A/G purified from cell culture supernatant.
Endotoxin level	Please contact with the lab for this information.
Accession	P0A8V2
Stability and Storage	Use a manual defrost freezer and avoid repeated freeze thaw cycles. Store at 4 °C for frequent use. Store at -20 °C for twelve months from the date of receipt.

Note

For research use only.

Data Image



Western blot

Western blot analysis of RNA polymerase beta expression in E.coli lysate.