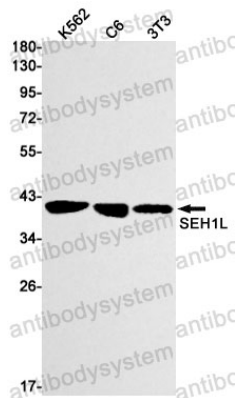


Anti-SEH1L Antibody (R2T08)

Summary

| | |
|------------------------------|---|
| Catalog No. | RMN89801 |
| Clone ID | R2T08 |
| Host species | Rabbit |
| Tested applications | IP: 1:10-1:20, WB: 1:500-1:1000 |
| Species reactivity | Human, Mouse, Rat |
| Form | Liquid |
| Storage buffer | TBS with 0.05% sodium azide, 0.05% BSA and 50% glycerol. |
| Concentration | 1 mg/ml |
| Purity | >95% by SDS-PAGE. |
| Clonality | Monoclonal |
| Isotype | IgG |
| Applications | IP, WB |
| Target | GATOR complex protein SEH1, Nup107-160 subcomplex subunit SEH1 |
| Purification | Protein A/G purified from cell culture supernatant. |
| Endotoxin level | Please contact with the lab for this information. |
| Accession | Q8R2U0 |
| Stability and Storage | Use a manual defrost freezer and avoid repeated freeze thaw cycles. Store at 4 °C for frequent use. Store at -20 °C for twelve months from the date of receipt. |
| Note | For research use only. |

Data Image



Western blot

Western blot analysis of SEH1L in K562, C6, 3T3 lysates using SEH1L antibody.