

Anti-P2RY13 Antibody (R2T01)

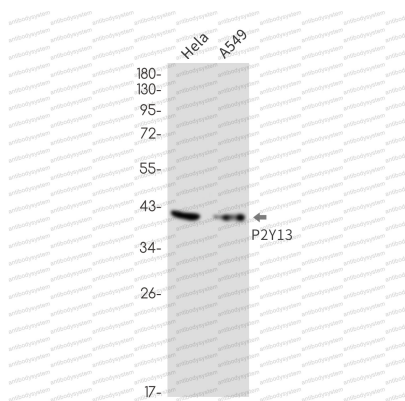
Summary

Catalog No.	RHN89101
Clone ID	R2T01
Host species	Rabbit
Tested applications	WB: 1:500-1:1000
Species reactivity	Human
Form	Liquid
Storage buffer	0.01M PBS, pH 7.4, 0.05% BSA, 50% Glycerol, 0.05% Sodium azide.
Concentration	1 mg/ml
Purity	>95% by SDS-PAGE.
Clonality	Monoclonal
Isotype	IgG
Applications	WB
Target	P2Y13, G-protein coupled receptor 86, GPR86, G-protein coupled receptor 94, P2Y purinoceptor 13, P2RY13, GPR94
Purification	Protein A/G purified from cell culture supernatant.
Endotoxin level	Please contact with the lab for this information.
Accession	Q9BPV8
Stability and Storage	Use a manual defrost freezer and avoid repeated freeze thaw cycles. Store at 4 °C for frequent use. Store at -20 °C for twelve months from the date of receipt.

Note

For research use only.

Data Image



Western blot

Western blot analysis of P2Y13 in HeLa, A549 lysates using P2Y13 antibody.