

Anti-L1RE1 Antibody (R2S95)

Summary

Catalog No.	RHN88802
Clone ID	R2S95
Host species	Rabbit
Tested applications	IP: 1:20, WB: 1:500-1:1000
Species reactivity	Human
Form	Liquid
Storage buffer	0.01M PBS, pH 7.4, 0.05% BSA, 50% Glycerol, 0.05% Sodium azide.
Concentration	1 mg/ml
Purity	>95% by SDS-PAGE.
Clonality	Monoclonal
Isotype	IgG
Applications	IP, WB
Target	L1RE1, LINE retrotransposable element 1, LINE1 retrotransposable element 1, LRE1, L1ORF1p, LINE-1 retrotransposable element ORF1 protein
Purification	Protein A/G purified from cell culture supernatant.
Endotoxin level	Please contact with the lab for this information.
Accession	Q9UN81

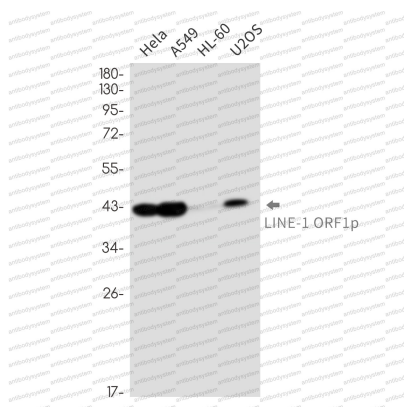
Stability and Storage

Use a manual defrost freezer and avoid repeated freeze thaw cycles. Store at 4 °C for frequent use. Store at -20 °C for twelve months from the date of receipt.

Note

For research use only.

Data Image



Western blot

Western blot analysis of LINE1 ORF1p in HeLa, A549, HL-60, U2OS lysates using LINE 1 ORF1p antibody.