

Anti-NCAPH2 Antibody (R2S59)

Summary

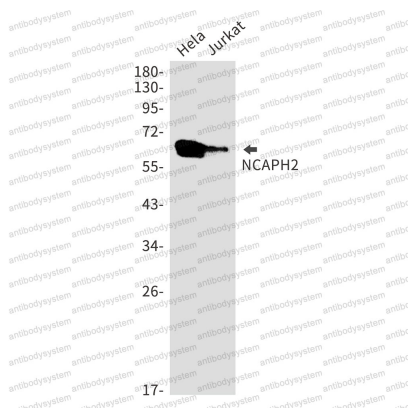
Catalog No.	RHN85201
Clone ID	R2S59
Host species	Rabbit
Tested applications	IF: 1:50-1:200, IHC: 1:50-1:100, IP: 1:20, WB: 1:500-1:1000
Species reactivity	Human
Form	Liquid
Storage buffer	0.01M PBS, pH 7.4, 0.05% BSA, 50% Glycerol, 0.05% Sodium azide.
Concentration	1 mg/ml
Purity	>95% by SDS-PAGE.
Clonality	Monoclonal
Isotype	IgG
Applications	IF, IHC, IP, WB
Target	CAPH2, hCAP-H2, NCAPH2, Kleisin-beta, Condensin-2 complex subunit H2, Non-SMC condensin II complex subunit H2, Chromosome-associated protein H2
Purification	Protein A/G purified from cell culture supernatant.
Endotoxin level	Please contact with the lab for this information.
Accession	Q6IBW4

Stability and Storage

Use a manual defrost freezer and avoid repeated freeze thaw cycles. Store at 4 °C for frequent use. Store at -20 °C for twelve months from the date of receipt.

Note

For research use only.

Data Image

Western blot

Western blot analysis of NCAPH2 in HeLa, Jurkat lysates using NCAPH2 antibody.