

# Recombinant Human CD121a/IL1R1 Protein, C-Fc

## Summary

---

<b>Catalog No.</b>	EHD06701
<b>Alternative Names</b>	IL-1RT1, IL-1R-alpha, mIL-1R1, CD121a, IL-1R-1, sIL-1RI, IL1RT1, IL1R1, sIL-1R1, IL1R, CD121 antigen-like family member A, Interleukin-1 receptor type I, Interleukin-1 receptor alpha, mIL-1RI, IL1RA, IL-1RT-1, Interleukin-1 receptor type 1, p80
<b>Form</b>	Lyophilized
<b>Storage buffer</b>	Lyophilized from a solution in PBS pH 7.4, 1mM EDTA, 4% Trehalose, 1% Mannitol.
<b>Purity</b>	>90% as determined by SDS-PAGE.
<b>Applications</b>	ELISA, Immunogen, SDS-PAGE, WB, Bioactivity testing in progress
<b>Endotoxin level</b>	Please contact with the lab for this information.
<b>Expression system</b>	Mammalian Cells
<b>Accession</b>	P14778
<b>Protein length</b>	Met1-Thr332
<b>Nature</b>	Recombinant
<b>Predicted molecular weight</b>	64.25 kDa
<b>Stability and Storage</b>	Use a manual defrost freezer and avoid repeated freeze thaw cycles. Store at 2 to 8°C for frequent use. Store at -20 to -80°C for twelve months from the date of receipt.
<b>Reconstitution</b>	Reconstitute in sterile water for a stock solution. A copy of datasheet will be provided with the products, please refer to it for details.

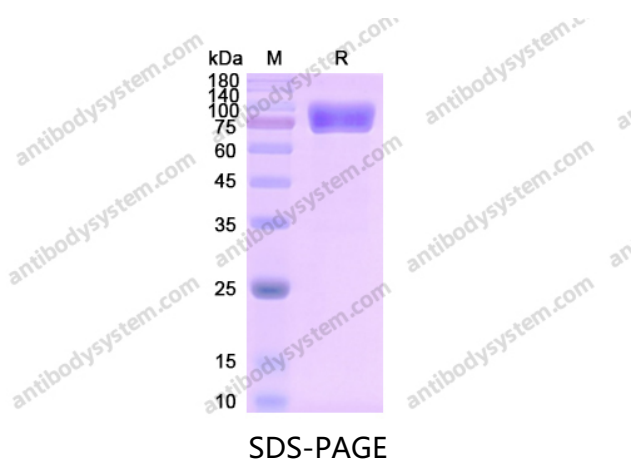
## Recombinant Proteins & Antibodies

**Species** Homo sapiens (Human)

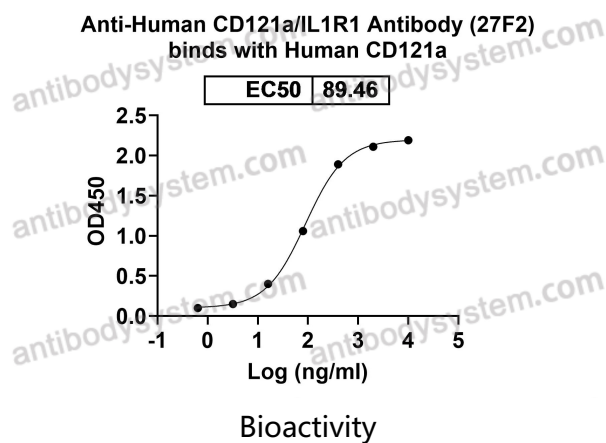
**Shipping** In general, proteins are provided as lyophilized powder/frozen liquid. They are shipped out with dry ice/blue ice unless customers require otherwise.

**Note** For research use only.

## Data Image



SDS PAGE for recombinant Human CD121a / IL1R1



Detects Human CD121a/IL1R1 Antibody (27F2) in indirect ELISAs.