

Anti-NEK6 Antibody (R2R13)

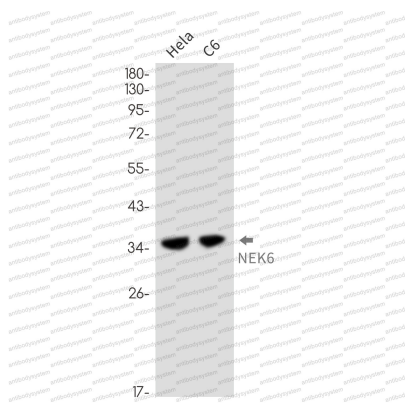
Summary

Catalog No.	RHN74401
Clone ID	R2R13
Host species	Rabbit
Tested applications	WB: 1:500-1:1000
Species reactivity	Human, Rat
Form	Liquid
Storage buffer	0.01M PBS, pH 7.4, 0.05% BSA, 50% Glycerol, 0.05% Sodium azide.
Concentration	1 mg/ml
Purity	>95% by SDS-PAGE.
Clonality	Monoclonal
Isotype	IgG
Applications	WB
Target	NEK6, Never in mitosis A-related kinase 6, Protein kinase SID6-1512, NimA-related protein kinase 6, Serine/threonine-protein kinase Nek6
Purification	Protein A/G purified from cell culture supernatant.
Endotoxin level	Please contact with the lab for this information.
Accession	Q9HC98
Stability and Storage	Use a manual defrost freezer and avoid repeated freeze thaw cycles. Store at 4 °C for frequent use. Store at -20 °C for twelve months from the date of receipt.

Note

For research use only.

Data Image



Western blot

Western blot analysis of NEK6 in HeLa, C6 lysates using NEK6 antibody.