

Anti-NEK6 Antibody (R2R12)

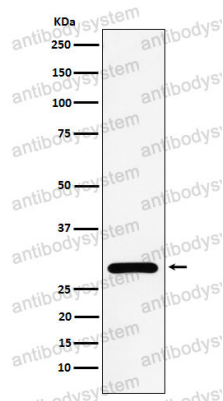
Summary

| | |
|------------------------------|---|
| Catalog No. | RHN74402 |
| Clone ID | R2R12 |
| Host species | Rabbit |
| Tested applications | IP: 1:20-1:50, WB: 1:1000-1:2000 |
| Species reactivity | Human, Mouse, Rat |
| Form | Liquid |
| Storage buffer | 0.01M PBS, pH 7.4, 0.05% BSA, 50% Glycerol, 0.05% Sodium azide. |
| Concentration | 1 mg/ml |
| Purity | >95% by SDS-PAGE. |
| Clonality | Monoclonal |
| Isotype | IgG |
| Applications | IP, WB |
| Target | NEK6, Never in mitosis A-related kinase 6, Protein kinase SID6-1512, NimA-related protein kinase 6, Serine/threonine-protein kinase Nek6 |
| Purification | Protein A/G purified from cell culture supernatant. |
| Endotoxin level | Please contact with the lab for this information. |
| Accession | Q9HC98 |
| Stability and Storage | Use a manual defrost freezer and avoid repeated freeze thaw cycles. Store at 4 °C for frequent use. Store at -20 °C for twelve months from the date of receipt. |

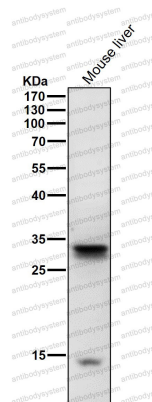
Note

For research use only.

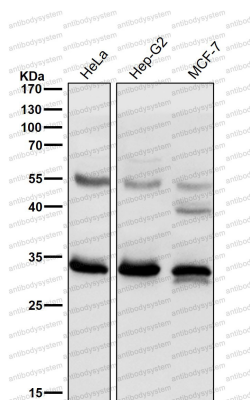
Data Image

**Western blot**

Western blot analysis of NEK6 expression in HeLa cell lysate.

**Western blot**

All lanes use the Antibody at 1:2K dilution for 1 hour at room temperature.



Western blot

All lanes use the Antibody at 1:2K dilution for 1 hour at room temperature.