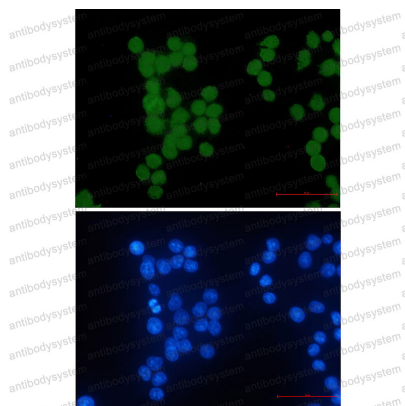


Anti-HIPK2 Antibody (R2Q65)

Summary

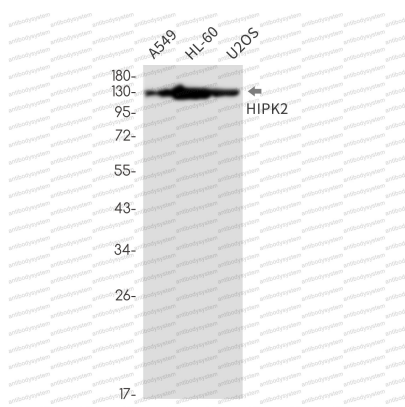
Catalog No.	RHN70901
Clone ID	R2Q65
Host species	Rabbit
Tested applications	IF: 1:50-1:200, IP: 1:20, WB: 1:500-1:1000
Species reactivity	Human
Form	Liquid
Storage buffer	0.01M PBS, pH 7.4, 0.05% BSA, 50% Glycerol, 0.05% Sodium azide.
Concentration	1 mg/ml
Purity	>95% by SDS-PAGE.
Clonality	Monoclonal
Isotype	IgG
Applications	IF, IP, WB
Target	hHIPk2, HIPK2, Homeodomain-interacting protein kinase 2
Purification	Protein A/G purified from cell culture supernatant.
Endotoxin level	Please contact with the lab for this information.
Accession	Q9H2X6
Stability and Storage	Use a manual defrost freezer and avoid repeated freeze thaw cycles. Store at 4 °C for frequent use. Store at -20 °C for twelve months from the date of receipt.
Note	For research use only.

Data Image



Immunofluorescence

Immunocytochemistry analysis of HIPK2 (green) in hela using HIPK2 antibody, and DAPI (blue)



Western blot

Western blot analysis of HIPK2 in A549, HL-60, U2OS lysates using HIPK2 antibody.