

# Anti-SSX2IP Antibody (R2P99)

## Summary

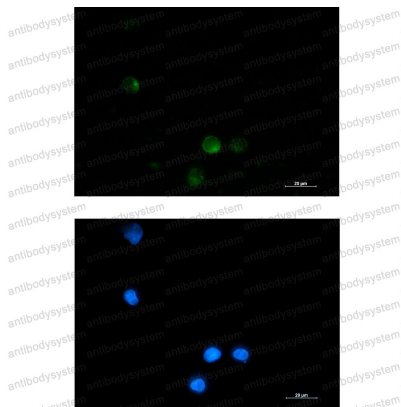
---

<b>Catalog No.</b>	RHN66201
<b>Clone ID</b>	R2P99
<b>Host species</b>	Rabbit
<b>Tested applications</b>	IF: 1:50-1:200, IHC: 1:50-1:100, WB: 1:500-1:1000
<b>Species reactivity</b>	Human, Rat
<b>Form</b>	Liquid
<b>Storage buffer</b>	0.01M PBS, pH 7.4, 0.05% BSA, 50% Glycerol, 0.05% Sodium azide.
<b>Concentration</b>	1 mg/ml
<b>Purity</b>	>95% by SDS-PAGE.
<b>Clonality</b>	Monoclonal
<b>Isotype</b>	IgG
<b>Applications</b>	IF, IHC, WB
<b>Target</b>	KIAA0923, Afadin- and alpha-actinin-binding protein, ADIP, SSX2-interacting protein, SSX2IP, Afadin DIL domain-interacting protein
<b>Purification</b>	Protein A/G purified from cell culture supernatant.
<b>Endotoxin level</b>	Please contact with the lab for this information.
<b>Accession</b>	Q9Y2D8
<b>Stability and Storage</b>	Use a manual defrost freezer and avoid repeated freeze thaw cycles. Store at 4 °C for frequent use. Store at -20 °C for twelve months from the date of receipt.

**Note** For research use only.

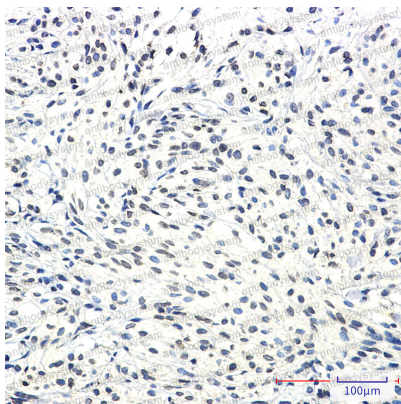
## Data Image

---



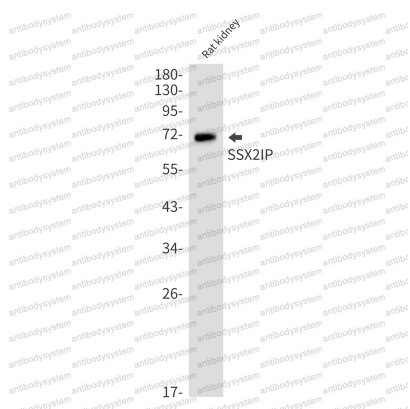
Immunofluorescence

Immunocytochemistry analysis of SSX2IP (green) in K562 using SSX2IP antibody, and DAPI (blue).



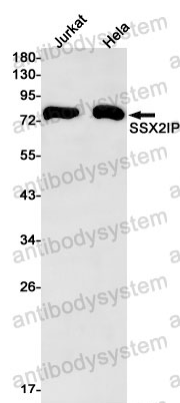
Immunohistochemical

Immunohistochemistry analysis of paraffin-embedded Human Brain using SSX2IP antibody. High-pressure and temperature Sodium Citrate pH 6.0 was used for antigen retrieval.



Western blot analysis of SSX2IP in rat kidney lysates using SSX2IP antibody.

Western blot



Western blot analysis of SSX2IP in Jurkat, HeLa lysates using SSX2IP antibody

Western blot