

Anti-CELF1 Antibody (R2N70)

Summary

Catalog No.	RHN29801
Clone ID	R2N70
Host species	Rabbit
Tested applications	IF: 1:50-1:200, IHC: 1:50-1:100, IP: 1:20, WB: 1:500-1:1000
Species reactivity	Human, Rat
Form	Liquid
Storage buffer	0.01M PBS, pH 7.4, 0.05% BSA, 50% Glycerol, 0.05% Sodium azide.
Concentration	1 mg/ml
Purity	>95% by SDS-PAGE.
Clonality	Monoclonal
Isotype	IgG
Applications	IF, IHC, IP, WB
Target	CELF-1, CUGBP1, CUGBP Elav-like family member 1, Deadenylation factor CUG-BP, Embryo deadenylation element-binding protein homolog, EDEN-BP homolog, CELF1, RNA-binding protein BRUNOL-2, 50 kDa nuclear polyadenylated RNA-binding protein, CUG triplet repeat RNA-binding protein 1, BRUNOL2, CUGBP, NAB50, CUG-BP- and ETR-3-like factor 1, Bruno-like protein 2, CUG-BP1
Purification	Protein A/G purified from cell culture supernatant.
Endotoxin level	Please contact with the lab for this information.
Accession	Q92879

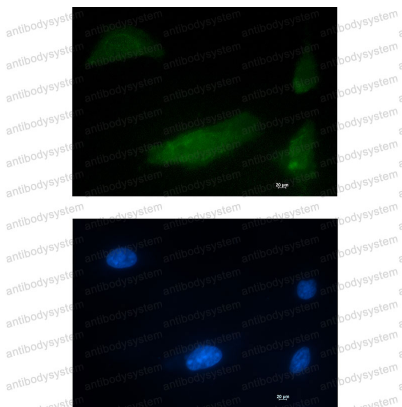
Stability and Storage

Use a manual defrost freezer and avoid repeated freeze thaw cycles. Store at 4 °C for frequent use. Store at -20 °C for twelve months from the date of receipt.

Note

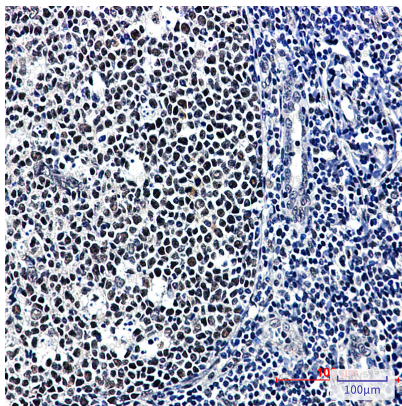
For research use only.

Data Image



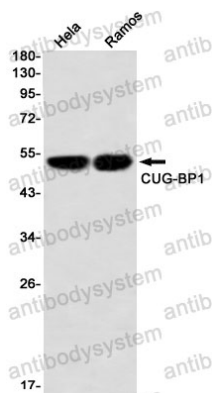
Immunofluorescence

Immunocytochemistry analysis of CUG BP1 (green) in HT-1080 using CUG BP1 antibody, and DAPI (blue).



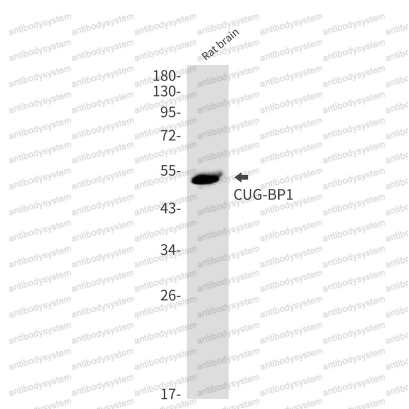
Immunohistochemical

Immunohistochemistry analysis of paraffin-embedded Human tonsil using CUGBP1 antibody. High-pressure and temperature Sodium Citrate pH 6.0 was used for antigen retrieval.



Western blot

Western blot analysis of CUGBP1 in HeLa, Ramos lysates using CUGBP1 antibody



Western blot

Western blot analysis of CUGBP1 in rat brain lysates using CUGBP1 antibody.