

Anti-PHLDA1 Antibody (R2N68)

Summary

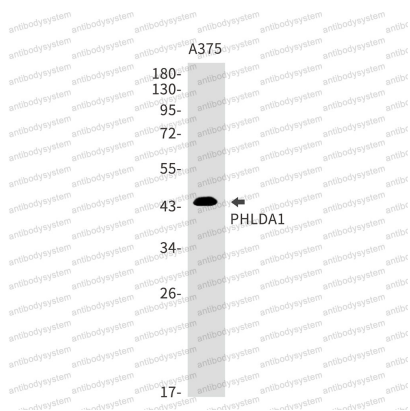
Catalog No.	RHN29501
Clone ID	R2N68
Host species	Rabbit
Tested applications	IF: 1:50-1:200, IHC: 1:50-1:100, WB: 1:500-1:1000
Species reactivity	Human
Form	Liquid
Storage buffer	0.01M PBS, pH 7.4, 0.05% BSA, 50% Glycerol, 0.05% Sodium azide.
Concentration	1 mg/ml
Purity	>95% by SDS-PAGE.
Clonality	Monoclonal
Isotype	IgG
Applications	IF, IHC, WB
Target	Proline- and histidine-rich protein, T-cell death-associated gene 51 protein, Pleckstrin homology-like domain family A member 1, PQR protein, Apoptosis-associated nuclear protein, PHRIP, PHLDA1, Proline- and glutamine-rich protein, TDAG51, PQ-rich protein
Purification	Protein A/G purified from cell culture supernatant.
Endotoxin level	Please contact with the lab for this information.
Accession	Q8WV24

Stability and Storage

Use a manual defrost freezer and avoid repeated freeze thaw cycles. Store at 4 °C for frequent use. Store at -20 °C for twelve months from the date of receipt.

Note

For research use only.

Data Image

Western blot

Western blot analysis of PHLDA1 in A375 lysates using PHLDA1 antibody.