

Recombinant Human CD142/F3/TF Protein, C-His

Summary

Catalog No.	EHD00601
Alternative Names	Tissue factor, CD142, F3, Thromboplastin, Coagulation factor III, TF
Form	Lyophilized
Storage buffer	Lyophilized from a solution in PBS pH 7.4, 1mM EDTA, 4% Trehalose, 1% Mannitol.
Purity	>90% as determined by SDS-PAGE.
Applications	ELISA, Immunogen, SDS-PAGE, WB, Bioactivity testing in progress
Endotoxin level	Please contact with the lab for this information.
Expression system	Mammalian Cells
Accession	P13726
Protein length	Met1-Glu251
Nature	Recombinant
Predicted molecular weight	29.24 kDa
Stability and Storage	Use a manual defrost freezer and avoid repeated freeze thaw cycles. Store at 2 to 8°C for frequent use. Store at -20 to -80°C for twelve months from the date of receipt.
Reconstitution	Reconstitute in sterile water for a stock solution. A copy of datasheet will be provided with the products, please refer to it for details.
Species	Homo sapiens (Human)

Shipping

In general, proteins are provided as lyophilized powder/frozen liquid. They are shipped out with dry ice/blue ice unless customers require otherwise.

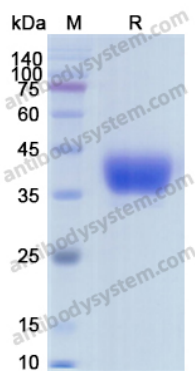
Note

For research use only.

Description

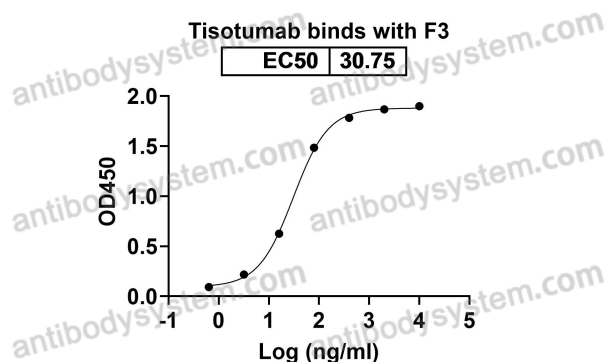
Tissue factor, also called platelet tissue factor, factor III, or CD142, is a protein encoded by the F3 gene, present in subendothelial tissue and leukocytes. CD142, also known as ,Coagulation Factor III, and Thromboplastin, is a 45 kD type I transmembrane glycoprotein. CD142 is a high-affinity receptor for coagulation factor VII and initiates the extrinsic pathway of blood coagulation. CD142 also plays an important role in a variety of diseases such as sepsis, atherosclerosis, and cancer. It is expressed on the surface of a variety of cells that are physically separated from the circulating blood which include smooth muscle cells, fibroblasts, keratinocytes, glomerular epithelial cells (cytoplasmic inclusions), astrocytes, myocardium, liver stromal cells, pancreas cells, and is also expressed on activated monocytes and stimulated endothelial cells.

Data Image



SDS-PAGE

SDS PAGE for recombinant Human CD142 / F3 / TF



Bioactivity

Detects Tisotumab in indirect ELISAs.