

# Anti-TAOK1 Antibody (R2M47)

## Summary

---

<b>Catalog No.</b>	RHK55001
<b>Clone ID</b>	R2M47
<b>Host species</b>	Rabbit
<b>Tested applications</b>	IP: 1:20, WB: 1:500-1:1000
<b>Species reactivity</b>	Human, Mouse, Rat
<b>Form</b>	Liquid
<b>Storage buffer</b>	0.01M PBS, pH 7.4, 0.05% BSA, 50% Glycerol, 0.05% Sodium azide.
<b>Concentration</b>	1 mg/ml
<b>Purity</b>	>95% by SDS-PAGE.
<b>Clonality</b>	Monoclonal
<b>Isotype</b>	IgG
<b>Applications</b>	IP, WB
<b>Target</b>	MARK Kinase, Thousand and one amino acid protein kinase 1, TAOK1, KIAA1361, Prostate-derived sterile 20-like kinase 2, hKFC-B, Prostate-derived STE20-like kinase 2, PSK-2, MARKK, Kinase from chicken homolog B, Serine/threonine-protein kinase TAO1, hTAOK1, PSK2, MAP3K16
<b>Purification</b>	Protein A/G purified from cell culture supernatant.
<b>Endotoxin level</b>	Please contact with the lab for this information.
<b>Accession</b>	Q7L7X3

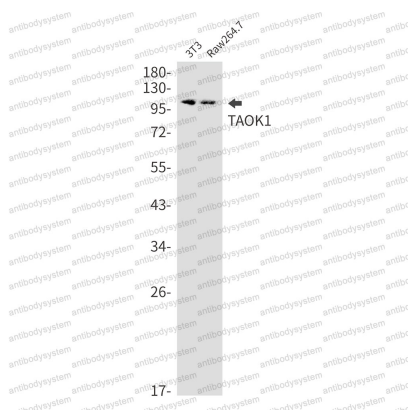
## Stability and Storage

Use a manual defrost freezer and avoid repeated freeze thaw cycles. Store at 4 °C for frequent use. Store at -20 °C for twelve months from the date of receipt.

## Note

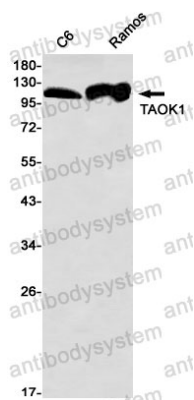
For research use only.

## Data Image



Western blot

Western blot analysis of TAOK1 in 3T3, Raw264.7 lysates using TAOK1 antibody.



Western blot

Western blot analysis of TAOK1 in C6, Ramos lysates using TAOK1 antibody.