

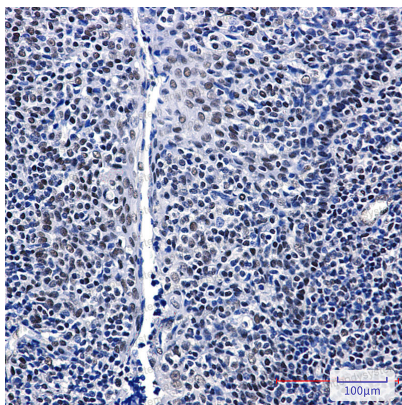
Anti-GTPBP4 Antibody (R2M40)

Summary

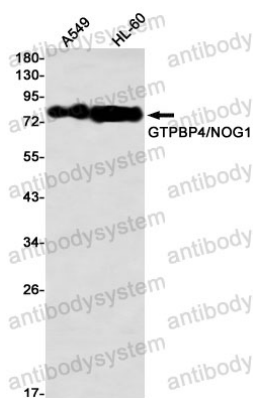
Catalog No.	RHK53401
Clone ID	R2M40
Host species	Rabbit
Tested applications	IHC: 1:50-1:100, IP: 1:20, WB: 1:500-1:1000
Species reactivity	Human
Form	Liquid
Storage buffer	0.01M PBS, pH 7.4, 0.05% BSA, 50% Glycerol, 0.05% Sodium azide.
Concentration	1 mg/ml
Purity	>95% by SDS-PAGE.
Clonality	Monoclonal
Isotype	IgG
Applications	IHC, IP, WB
Target	Chronic renal failure gene protein, NOG1, CRFG, Nucleolar GTP-binding protein 1, GTPBP4, GTP-binding protein NGB
Purification	Protein A/G purified from cell culture supernatant.
Endotoxin level	Please contact with the lab for this information.
Accession	Q9BZE4
Stability and Storage	Use a manual defrost freezer and avoid repeated freeze thaw cycles. Store at 4 °C for frequent use. Store at -20 °C for twelve months from the date of receipt.

Note

For research use only.

Data Image**Immunohistochemical**

Immunohistochemistry analysis of paraffin-embedded Human tonsil using GTPBP4/NOG1 antibody. High-pressure and temperature Sodium Citrate pH 6.0 was used for antigen retrieval.

**Western blot**

Western blot analysis of GTPBP4/NOG1 in A549, HL-60 lysates using GTPBP4 antibody.