

# Anti-FTO Antibody (R2L77)

## Summary

---

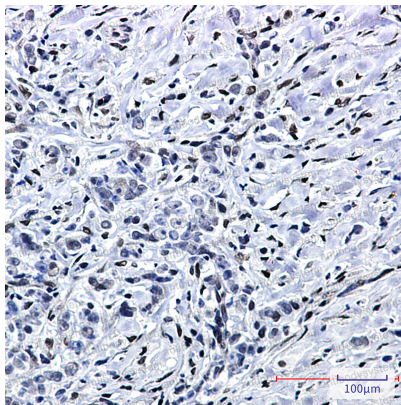
|                            |   |
|----------------------------|---|
| <b>Catalog No.</b>         | RHK31001  |
| <b>Clone ID</b>            | R2L77   |
| <b>Host species</b>        | Rabbit  |
| <b>Tested applications</b> | IHC: 1:50-1:100, WB: 1:500-1:1000   |
| <b>Species reactivity</b>  | Human   |
| <b>Form</b>                | Liquid  |
| <b>Storage buffer</b>      | 0.01M PBS, pH 7.4, 0.05% BSA, 50% Glycerol, 0.05% Sodium azide.   |
| <b>Concentration</b>       | 1 mg/ml   |
| <b>Purity</b>              | >95% by SDS-PAGE.   |
| <b>Clonality</b>           | Monoclonal  |
| <b>Isotype</b>             | IgG   |
| <b>Applications</b>        | IHC, WB   |
| <b>Target</b>              | U6 small nuclear RNA N(6)-methyladenosine-demethylase FTO, m6A(m)-demethylase FTO, mRNA N(6)-methyladenosine demethylase FTO, KIAA1752, tRNA N1-methyl adenine demethylase FTO, U6 small nuclear RNA (2'-O-methyladenosine-N(6)-)-demethylase FTO, Fat mass and obesity-associated protein, FTO, mRNA (2'-O-methyladenosine-N(6)-)-demethylase FTO, Alpha-ketoglutarate-dependent dioxygenase FTO |
| <b>Purification</b>        | Protein A/G purified from cell culture supernatant.   |
| <b>Endotoxin level</b>     | Please contact with the lab for this information.   |
| <b>Accession</b>           | Q9C0B1  |

**Stability and Storage**

Use a manual defrost freezer and avoid repeated freeze thaw cycles. Store at 4 °C for frequent use. Store at -20 °C for twelve months from the date of receipt.

**Note**

For research use only.

**Data Image**

Immunohistochemical

Immunohistochemistry analysis of paraffin-embedded Human breast cancer using FTO antibody. High-pressure and temperature Sodium Citrate pH 6.0 was used for antigen retrieval.



Western blot

Western blot analysis of FTO in K562, HeLa lysates using FTO antibody.