

Anti-FTO Antibody (R2L76)

Summary

Catalog No.	RHK31003
Clone ID	R2L76
Host species	Rabbit
Tested applications	IF: 1:50-1:200, IHC: 1:50-1:100, WB: 1:500-1:1000
Species reactivity	Human
Form	Liquid
Storage buffer	0.01M PBS, pH 7.4, 0.05% BSA, 50% Glycerol, 0.05% Sodium azide.
Concentration	1 mg/ml
Purity	>95% by SDS-PAGE.
Clonality	Monoclonal
Isotype	IgG
Applications	IF, IHC, WB
Target	U6 small nuclear RNA N(6)-methyladenosine-demethylase FTO, m6A(m)-demethylase FTO, mRNA N(6)-methyladenosine demethylase FTO, KIAA1752, tRNA N1-methyl adenine demethylase FTO, U6 small nuclear RNA (2'-O-methyladenosine-N(6)-)-demethylase FTO, Fat mass and obesity-associated protein, FTO, mRNA (2'-O-methyladenosine-N(6)-)-demethylase FTO, Alpha-ketoglutarate-dependent dioxygenase FTO
Purification	Protein A/G purified from cell culture supernatant.
Endotoxin level	Please contact with the lab for this information.
Accession	Q9C0B1

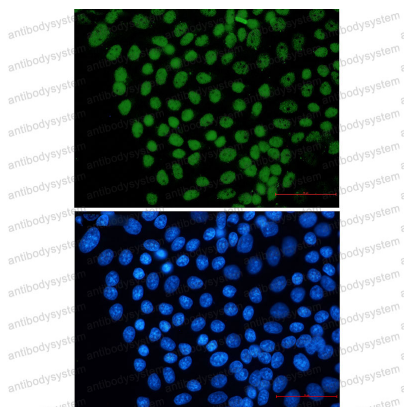
Stability and Storage

Use a manual defrost freezer and avoid repeated freeze thaw cycles. Store at 4 °C for frequent use. Store at -20 °C for twelve months from the date of receipt.

Note

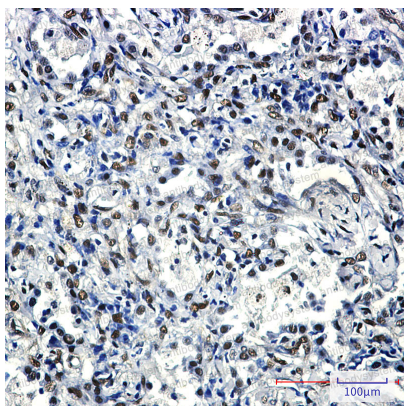
For research use only.

Data Image



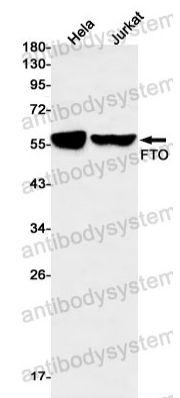
Immunofluorescence

Immunocytochemistry analysis of FTO (green) in HeLa using FTO antibody, and DAPI (blue)



Immunohistochemical

Immunohistochemistry analysis of paraffin-embedded Human lung cancer using FTO antibody. High-pressure and temperature Sodium Citrate pH 6.0 was used for antigen retrieval.



Western blot

Western blot analysis of FTO in HeLa, Jurkat lysates using FTO antibody.