

# Anti-NEDD4L/Nedd4-2 Antibody (R2L61)

## Summary

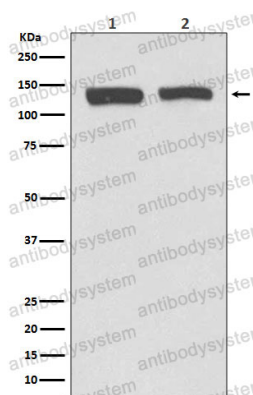
---

<b>Catalog No.</b>	RHK09101
<b>Clone ID</b>	R2L61
<b>Host species</b>	Rabbit
<b>Tested applications</b>	IP: 1:20-1:50, WB: 1:1000-1:5000
<b>Species reactivity</b>	Human, Mouse, Rat
<b>Form</b>	Liquid
<b>Storage buffer</b>	0.01M PBS, pH 7.4, 0.05% BSA, 50% Glycerol, 0.05% Sodium azide.
<b>Concentration</b>	1 mg/ml
<b>Purity</b>	>95% by SDS-PAGE.
<b>Clonality</b>	Monoclonal
<b>Isotype</b>	IgG
<b>Applications</b>	IP, WB
<b>Target</b>	NEDD4L, E3 ubiquitin-protein ligase NEDD4-like, NEDD4.2, NEDL3, Nedd4-2, HECT-type E3 ubiquitin transferase NED4L, KIAA0439
<b>Purification</b>	Protein A/G purified from cell culture supernatant.
<b>Endotoxin level</b>	Please contact with the lab for this information.
<b>Accession</b>	Q96PU5
<b>Stability and Storage</b>	Use a manual defrost freezer and avoid repeated freeze thaw cycles. Store at 4 °C for frequent use. Store at -20 °C for twelve months from the date of receipt.

**Note**

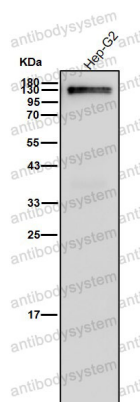
For research use only.

## Data Image



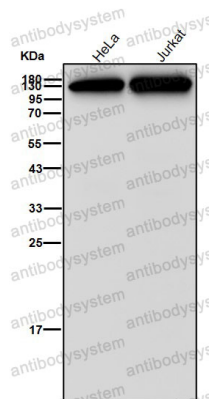
Western blot

Western blot analysis of NEDD4-2 expression in (1) K562 cell lysate; (2) HeLa cell lysate.



Western blot

All lanes use the Antibody at 1:5K dilution for 1 hour at room temperature.



Western blot

All lanes use the Antibody at 1:5K dilution for 1 hour at room temperature.