

Anti-CCL27/CTACK Antibody (R2L18)

Summary

Catalog No.	RHJ88601
Clone ID	R2L18
Host species	Rabbit
Tested applications	FCM: 1:20-1:100, IF: 1:50-1:200, WB: 1:1000-1:2000
Species reactivity	Human, Mouse, Rat
Form	Liquid
Storage buffer	0.01M PBS, pH 7.4, 0.05% BSA, 50% Glycerol, 0.05% Sodium azide.
Concentration	1 mg/ml
Purity	>95% by SDS-PAGE.
Clonality	Monoclonal
Isotype	IgG
Applications	FCM, IF, WB
Target	IL-11 R-alpha-locus chemokine, CC chemokine ILC, CTACK, Cutaneous T-cell-attracting chemokine, Skinkine, Small-inducible cytokine A27, CCL27, ESkin, C-C motif chemokine 27, ILC, SCYA27
Purification	Protein A/G purified from cell culture supernatant.
Endotoxin level	Please contact with the lab for this information.
Accession	Q9Y4X3

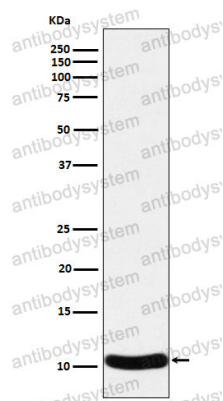
Stability and Storage

Use a manual defrost freezer and avoid repeated freeze thaw cycles. Store at 4 °C for frequent use. Store at -20 °C for twelve months from the date of receipt.

Note

For research use only.

Data Image



Western blot

Western blot analysis of CCL27 expression in Human CCL27 recombinant protein cell lysate.