

# Anti-PRKAB1 Antibody (R2L11)

## Summary

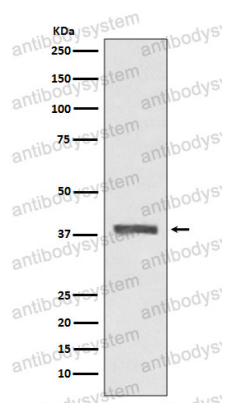
---

<b>Catalog No.</b>	RHJ87601
<b>Clone ID</b>	R2L11
<b>Host species</b>	Rabbit
<b>Tested applications</b>	FCM: 1:20-1:100, WB: 1:1000-1:2000
<b>Species reactivity</b>	Human, Mouse, Rat
<b>Form</b>	Liquid
<b>Storage buffer</b>	0.01M PBS, pH 7.4, 0.05% BSA, 50% Glycerol, 0.05% Sodium azide.
<b>Concentration</b>	1 mg/ml
<b>Purity</b>	>95% by SDS-PAGE.
<b>Clonality</b>	Monoclonal
<b>Isotype</b>	IgG
<b>Applications</b>	FCM, WB
<b>Target</b>	AMPK subunit beta-1, AMPKb, 5'-AMP-activated protein kinase subunit beta-1, AMPK, PRKAB1
<b>Purification</b>	Protein A/G purified from cell culture supernatant.
<b>Endotoxin level</b>	Please contact with the lab for this information.
<b>Accession</b>	Q9Y478
<b>Stability and Storage</b>	Use a manual defrost freezer and avoid repeated freeze thaw cycles. Store at 4 °C for frequent use. Store at -20 °C for twelve months from the date of receipt.

Note

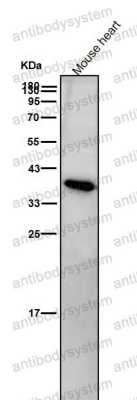
For research use only.

## Data Image



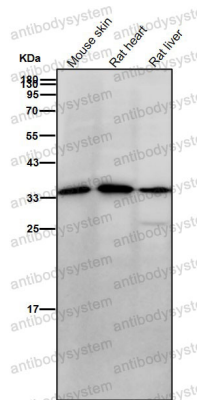
Western blot

Western blot analysis of AMPK beta 1 expression in HeLa cell lysate.



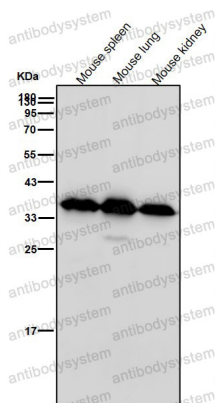
Western blot

All lanes use the Antibody at 1:2K dilution for 1 hour at room temperature.



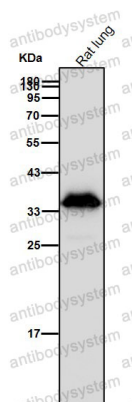
Western blot

All lanes use the Antibody at 1:2K dilution for 1 hour at room temperature.



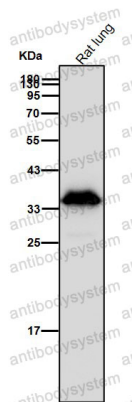
Western blot

All lanes use the Antibody at 1:2K dilution for 1 hour at room temperature.



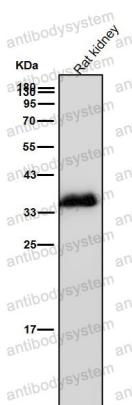
Western blot

All lanes use the Antibody at 1:2K dilution for 1 hour at room temperature.



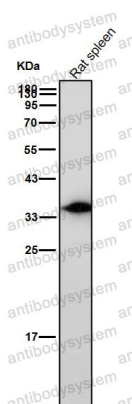
Western blot

All lanes use the Antibody at 1:2K dilution for 1 hour at room temperature.



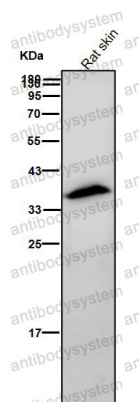
Western blot

All lanes use the Antibody at 1:2K dilution for 1 hour at room temperature.



Western blot

All lanes use the Antibody at 1:2K dilution for 1 hour at room temperature.



Western blot

All lanes use the Antibody at 1:2K dilution for 1 hour at room temperature.