

Anti-LEF1 Antibody (R2K80)

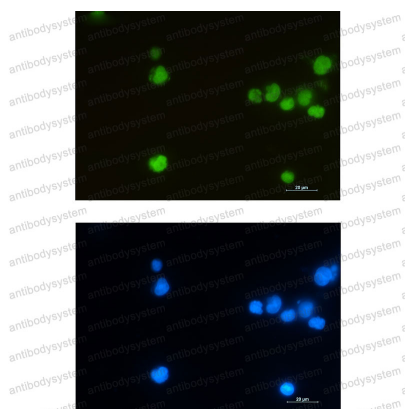
Summary

Catalog No.	RHJ78301
Clone ID	R2K80
Host species	Rabbit
Tested applications	IF: 1:50-1:200, WB: 1:500-1:1000
Species reactivity	Human
Form	Liquid
Storage buffer	0.01M PBS, pH 7.4, 0.05% BSA, 50% Glycerol, 0.05% Sodium azide.
Concentration	1 mg/ml
Purity	>95% by SDS-PAGE.
Clonality	Monoclonal
Isotype	IgG
Applications	IF, WB
Target	Lymphoid enhancer-binding factor 1, T cell-specific transcription factor 1-alpha, LEF-1, TCF1-alpha, LEF1
Purification	Protein A/G purified from cell culture supernatant.
Endotoxin level	Please contact with the lab for this information.
Accession	Q9UJU2
Stability and Storage	Use a manual defrost freezer and avoid repeated freeze thaw cycles. Store at 4 °C for frequent use. Store at -20 °C for twelve months from the date of receipt.

Note

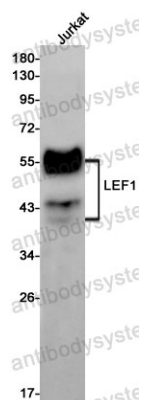
For research use only.

Data Image



Immunofluorescence

Immunocytochemistry analysis of LEF1 (green) in Jurkat using LEF1 antibody, and DAPI (blue).



Western blot

Western blot analysis of LEF1 in Jurkat lysates using LEF1 antibody.