

Anti-RPS6KB2 Antibody (R2K67)

Summary

Catalog No.	RHJ73501
Clone ID	R2K67
Host species	Rabbit
Tested applications	IF: 1:50-1:200, IHC: 1:50-1:100, WB: 1:500-1:1000
Species reactivity	Human, Mouse, Rat
Form	Liquid
Storage buffer	0.01M PBS, pH 7.4, 0.05% BSA, 50% Glycerol, 0.05% Sodium azide.
Concentration	1 mg/ml
Purity	>95% by SDS-PAGE.
Clonality	Monoclonal
Isotype	IgG
Applications	IF, IHC, WB
Target	p70 ribosomal S6 kinase beta, 70 kDa ribosomal protein S6 kinase 2, p70 S6 kinase beta, p70 S6KB, p70-S6K 2, S6K2, STK14B, S6K-beta, p70-beta, S6 kinase-related kinase, SRK, S6K-beta-2, Serine/threonine-protein kinase 14B, RPS6KB2, p70 S6K-beta, P70S6K2, Ribosomal protein S6 kinase beta-2
Purification	Protein A/G purified from cell culture supernatant.
Endotoxin level	Please contact with the lab for this information.
Accession	Q9UBS0

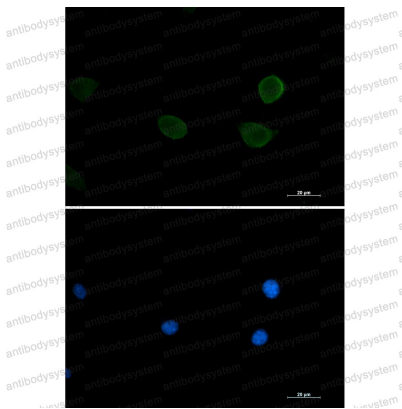
Stability and Storage

Use a manual defrost freezer and avoid repeated freeze thaw cycles. Store at 4 °C for frequent use. Store at -20 °C for twelve months from the date of receipt.

Note

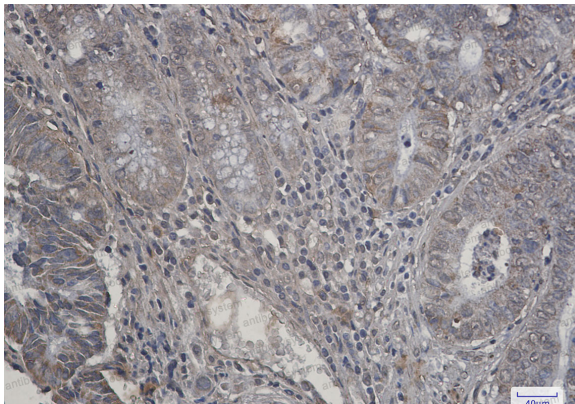
For research use only.

Data Image



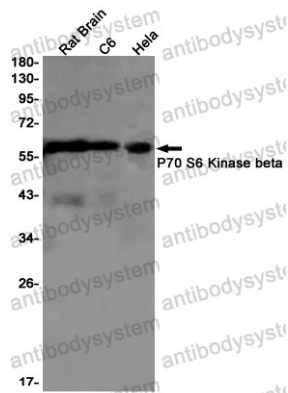
Immunofluorescence

Immunocytochemistry analysis of S6K2 (green) in 3T3 using S6K2 antibody, and DAPI (blue).



Immunohistochemical

Immunohistochemistry analysis of paraffin-embedded Human colon cancer tissue using P70 S6 Kinase beta antibody. High-pressure and temperature Sodium Citrate pH 6.0 was used for antigen retrieval.



Western blot

Western blot analysis of P70 S6 Kinase beta in rat Brain, C6, HeLa lysates using P70 S6 Kinase beta antibody.