

Anti-Phospho-RPS6KB2 (S371) Antibody (R2K65)

Summary

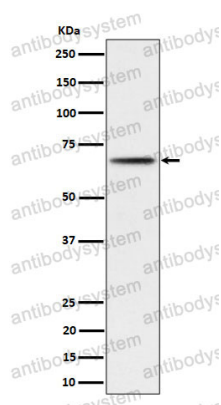
Catalog No.	RHJ73502
Clone ID	R2K65
Host species	Rabbit
Tested applications	WB: 1:1000-1:2000
Species reactivity	Human, Mouse, Rat
Form	Liquid
Storage buffer	0.01M PBS, pH 7.4, 0.05% BSA, 50% Glycerol, 0.05% Sodium azide.
Concentration	1 mg/ml
Purity	>95% by SDS-PAGE.
Clonality	Monoclonal
Isotype	IgG
Applications	WB
Target	p70 ribosomal S6 kinase beta, 70 kDa ribosomal protein S6 kinase 2, p70 S6 kinase beta, p70 S6KB, p70-S6K 2, S6K2, STK14B, S6K-beta, p70-beta, S6 kinase-related kinase, SRK, S6K-beta-2, Serine/threonine-protein kinase 14B, RPS6KB2, p70 S6K-beta, P70S6K2, Ribosomal protein S6 kinase beta-2
Purification	Protein A/G purified from cell culture supernatant.
Endotoxin level	Please contact with the lab for this information.
Accession	Q9UBS0

Stability and Storage

Use a manual defrost freezer and avoid repeated freeze thaw cycles. Store at 4 °C for frequent use. Store at -20 °C for twelve months from the date of receipt.

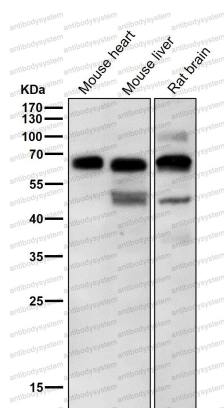
Note

For research use only.

Data Image

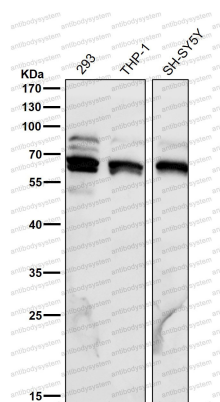
Western blot

Western blot analysis of Phospho-P70 S6 Kinase beta (S371) expression in 293 cell lysate.



Western blot

All lanes use the Antibody at 1:2K dilution for 1 hour at room temperature.



Western blot

All lanes use the Antibody at 1:2K dilution for 1 hour at room temperature.