

Anti-NOTCH4 Antibody (R2J80)

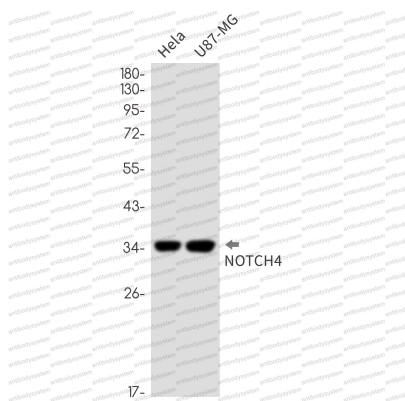
Summary

Catalog No.	RHJ43502
Clone ID	R2J80
Host species	Rabbit
Tested applications	WB: 1:500-1:1000
Species reactivity	Human
Form	Liquid
Storage buffer	0.01M PBS, pH 7.4, 0.05% BSA, 50% Glycerol, 0.05% Sodium azide.
Concentration	1 mg/ml
Purity	>95% by SDS-PAGE.
Clonality	Monoclonal
Isotype	IgG
Applications	WB
Target	NOTCH4, INT3, hNotch4, Neurogenic locus notch homolog protein 4, Notch 4
Purification	Protein A/G purified from cell culture supernatant.
Endotoxin level	Please contact with the lab for this information.
Accession	Q99466
Stability and Storage	Use a manual defrost freezer and avoid repeated freeze thaw cycles. Store at 4 °C for frequent use. Store at -20 °C for twelve months from the date of receipt.

Note

For research use only.

Data Image



Western blot

Western blot analysis of NOTCH4 in HeLa, U87-MG lysates using Notch4 antibody.