

Anti-CD85j/LILRB1/ILT2 Antibody (R2J26)

Summary

Catalog No.	RHJ26401
Clone ID	R2J26
Host species	Rabbit
Tested applications	IP: 1:20, WB: 1:500-1:1000
Species reactivity	Human
Form	Liquid
Storage buffer	0.01M PBS, pH 7.4, 0.05% BSA, 50% Glycerol, 0.05% Sodium azide.
Concentration	1 mg/ml
Purity	>95% by SDS-PAGE.
Clonality	Monoclonal
Isotype	IgG
Applications	IP, WB
Target	LIR1, Immunoglobulin-like transcript 2, MIR7, CD85 antigen-like family member J, Monocyte/macrophage immunoglobulin-like receptor 7, ILT-2, Leukocyte immunoglobulin-like receptor subfamily B member 1, LIR-1, CD85j, ILT2, LILRB1, MIR-7, Leukocyte immunoglobulin-like receptor 1
Purification	Protein A/G purified from cell culture supernatant.
Endotoxin level	Please contact with the lab for this information.
Accession	Q8NHL6

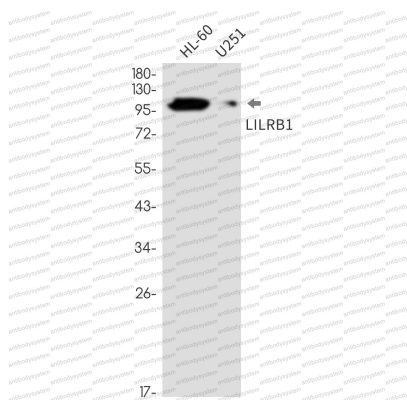
Stability and Storage

Use a manual defrost freezer and avoid repeated freeze thaw cycles. Store at 4 °C for frequent use. Store at -20 °C for twelve months from the date of receipt.

Note

For research use only.

Data Image



Western blot

Western blot analysis of LILRB1 in HL-60, U251 lysates using LILRB1 antibody.