

Anti-MAPK14/p38 Antibody (R2H01)

Summary

Catalog No.	RHH28301
Clone ID	R2H01
Host species	Rabbit
Tested applications	WB: 1:500-1:1000
Species reactivity	Human, Rat, Hamster
Form	Liquid
Storage buffer	0.01M PBS, pH 7.4, 0.05% BSA, 50% Glycerol, 0.05% Sodium azide.
Concentration	1 mg/ml
Purity	>95% by SDS-PAGE.
Clonality	Monoclonal
Isotype	IgG
Applications	WB
Target	Stress-activated protein kinase 2a, Mitogen-activated protein kinase 14, Mitogen-activated protein kinase p38 alpha, SAPK2A, Cytokine suppressive anti-inflammatory drug-binding protein, CSBP, CSPB1, MAP kinase 14, MAP kinase MXI2, MAPK14, CSBP2, MAP kinase p38 alpha, MAPK 14, MXI2, CSAID-binding protein, MAX-interacting protein 2, CSBP1, SAPK2a
Purification	Protein A/G purified from cell culture supernatant.
Endotoxin level	Please contact with the lab for this information.
Accession	Q16539

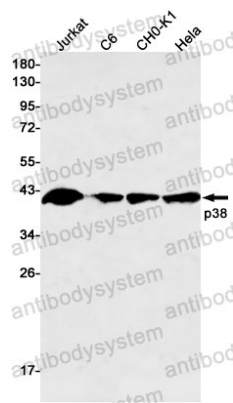
Stability and Storage

Use a manual defrost freezer and avoid repeated freeze thaw cycles. Store at 4 °C for frequent use. Store at -20 °C for twelve months from the date of receipt.

Note

For research use only.

Data Image



Western blot

Western blot analysis of p38 in Jurkat, C6, CHO-K1, HeLa lysates using p38 antibody.