

Anti-RPE65 Antibody (R2G92)

Summary

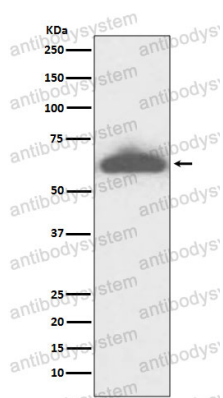
Catalog No.	RHH27401
Clone ID	R2G92
Host species	Rabbit
Tested applications	IP: 1:20-1:50, WB: 1:1000-1:2000
Species reactivity	Human, Mouse, Rat
Form	Liquid
Storage buffer	0.01M PBS, pH 7.4, 0.05% BSA, 50% Glycerol, 0.05% Sodium azide.
Concentration	1 mg/ml
Purity	>95% by SDS-PAGE.
Clonality	Monoclonal
Isotype	IgG
Applications	IP, WB
Target	Retinoid isomerohydrolase, Retinol isomerase, Retinal pigment epithelium-specific 65 kDa protein, RPE65, Lutein isomerase, Meso-zeaxanthin isomerase, All-trans-retinyl-palmitate hydrolase
Purification	Protein A/G purified from cell culture supernatant.
Endotoxin level	Please contact with the lab for this information.
Accession	Q16518

Stability and Storage

Use a manual defrost freezer and avoid repeated freeze thaw cycles. Store at 4 °C for frequent use. Store at -20 °C for twelve months from the date of receipt.

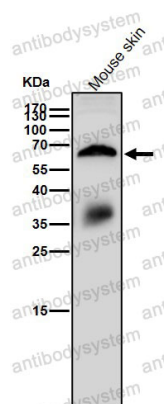
Note

For research use only.

Data Image

Western blot

Western blot analysis of RPE65 expression in mouse eyeball lysate.



Western blot

All lanes use the Antibody at 1:1K dilution for 1 hour at room temperature.