

# Anti-PKN1 Antibody (R2G90)

## Summary

---

<b>Catalog No.</b>	RHH26901
<b>Clone ID</b>	R2G90
<b>Host species</b>	Rabbit
<b>Tested applications</b>	WB: 1:500-1:1000
<b>Species reactivity</b>	Rat
<b>Form</b>	Liquid
<b>Storage buffer</b>	0.01M PBS, pH 7.4, 0.05% BSA, 50% Glycerol, 0.05% Sodium azide.
<b>Concentration</b>	1 mg/ml
<b>Purity</b>	>95% by SDS-PAGE.
<b>Clonality</b>	Monoclonal
<b>Isotype</b>	IgG
<b>Applications</b>	WB
<b>Target</b>	Protein kinase C-like PKN, Serine/threonine-protein kinase N1, PRK1, Serine-threonine protein kinase N, PKN, Protease-activated kinase 1, PRKCL1, PKN1, Protein-kinase C-related kinase 1, PAK-1, Protein kinase PKN-alpha, PAK1, Protein kinase C-like 1
<b>Purification</b>	Protein A/G purified from cell culture supernatant.
<b>Endotoxin level</b>	Please contact with the lab for this information.
<b>Accession</b>	Q16512

**Stability and Storage**

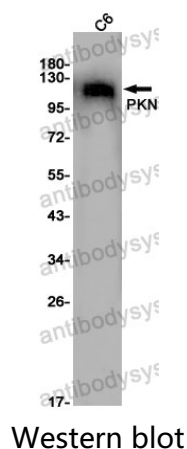
Use a manual defrost freezer and avoid repeated freeze thaw cycles. Store at 4 °C for frequent use. Store at -20 °C for twelve months from the date of receipt.

**Note**

For research use only.

**Data Image**

---



Western blot analysis of PKN in C6 lysates using PKN1 antibody.