

Anti-INA Antibody (R2G89)

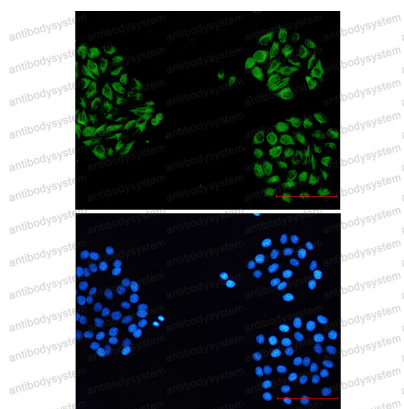
Summary

Catalog No.	RHH25901
Clone ID	R2G89
Host species	Rabbit
Tested applications	IF: 1:50-1:200, IHC: 1:50-1:100, IP: 1:20, WB: 1:500-1:1000
Species reactivity	Human, Mouse, Rat
Form	Liquid
Storage buffer	0.01M PBS, pH 7.4, 0.05% BSA, 50% Glycerol, 0.05% Sodium azide.
Concentration	1 mg/ml
Purity	>95% by SDS-PAGE.
Clonality	Monoclonal
Isotype	IgG
Applications	IF, IHC, IP, WB
Target	Alpha-Inx, Neurofilament-66, NEF5, 66 kDa neurofilament protein, Neurofilament 5, Alpha-internexin, NF-66, INA
Purification	Protein A/G purified from cell culture supernatant.
Endotoxin level	Please contact with the lab for this information.
Accession	Q16352
Stability and Storage	Use a manual defrost freezer and avoid repeated freeze thaw cycles. Store at 4 °C for frequent use. Store at -20 °C for twelve months from the date of receipt.

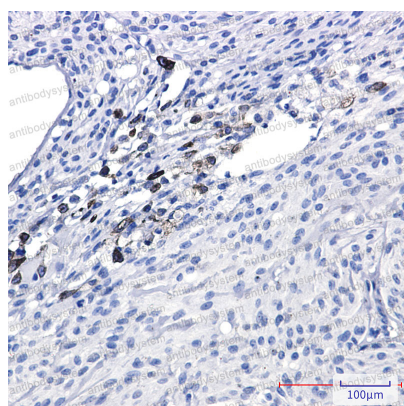
Note

For research use only.

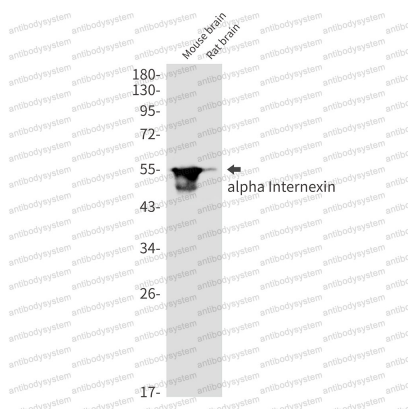
Data Image

**Immunofluorescence**

Immunocytochemistry analysis of alpha Internexin (green) in hela using alpha Internexin antibody, and DAPI(blue).

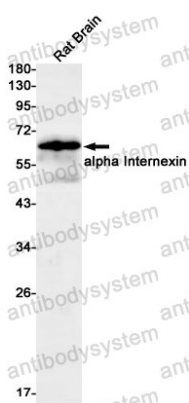
**Immunohistochemical**

Immunohistochemistry analysis of paraffin-embedded Human Brain using alpha Internexin antibody. High-pressure and temperature Sodium Citrate pH 6.0 was used for antigen retrieval.



Western blot

Western blot analysis of alpha Internexin in mouse brain, rat brain lysates using alpha Internexin antibody.



Western blot

Western blot analysis of alpha Internexin in rat Brain lysates using alpha Internexin antibody.